


JGI Leadership Team (JLT) August 2024


Nigel Mouncey
Joint Genome Institute
Director NMouncey@lbl.gov



Axel Visel
Deputy, Science Programs
AVisel@lbl.gov




Kjersten Fagnan
CIO, Data Science & Informatics
KFagnan@lbl.gov



Len Pennacchio
Deputy, Genomic Technologies
LPennacchio@lbl.gov




Massie Ballou
Manager, Communications & Outreach
MBallou@lbl.gov



Nick Everson
Deputy, Operations
NEverson@lbl.gov

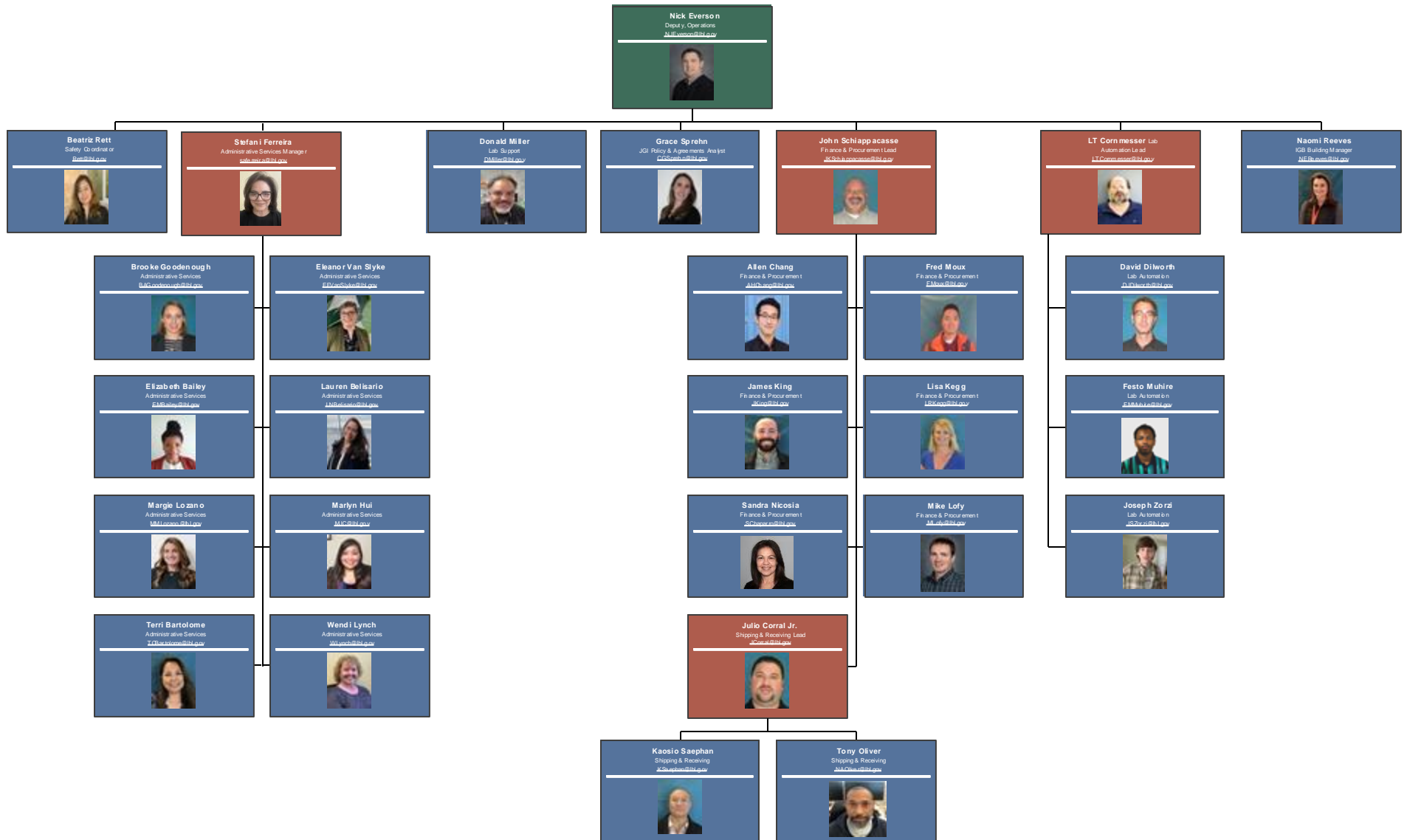


Tanja Woyke
Deputy, User Programs
TWoyke@lbl.gov



Tina Clarke
Principal HR Division Partner
TClarke@lbl.gov





Communications & Outreach

Massie Ballon

Manager Communications & Outreach
MLBallon@lbl.gov



Allison Joy

Communications & Outreach
AJoy@lbl.gov



Graham Rutherford

Communications & Outreach
GBRutherford@lbl.gov



Menaka Wilhelm

Communications & Outreach
Menakawilhelm@lbl.gov



Human Resources

Tina Clarke

Principal HR Division Partner
JLClarke@lbl.gov



Jenny Quan

Human Resources
JQuan@lbl.gov



Laquita Bowie

Human Resources
LBowie@lbl.gov

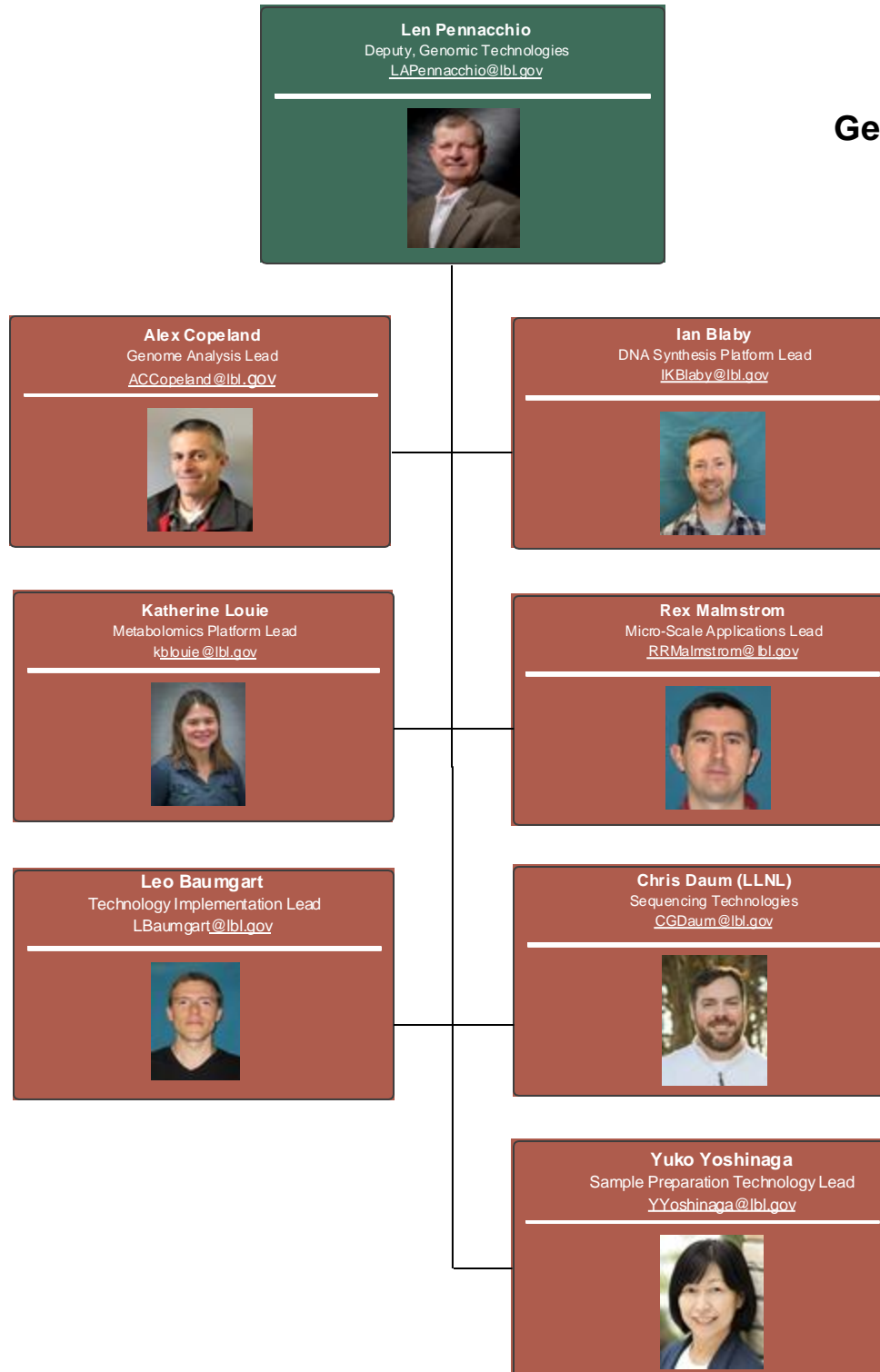


Sapana Kanakia

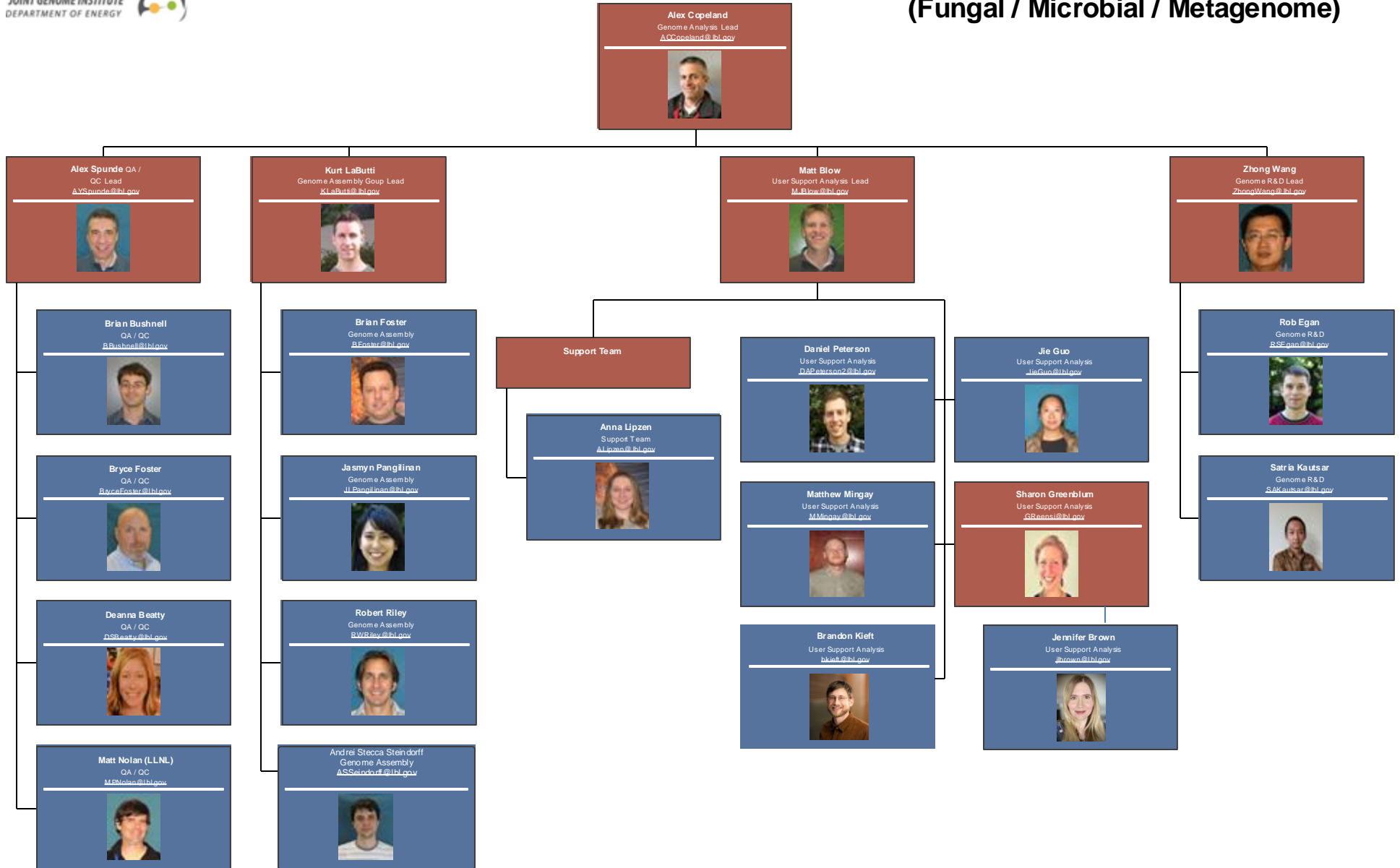
Human Resources
Skanakia@lbl.gov



Genomic Technologies


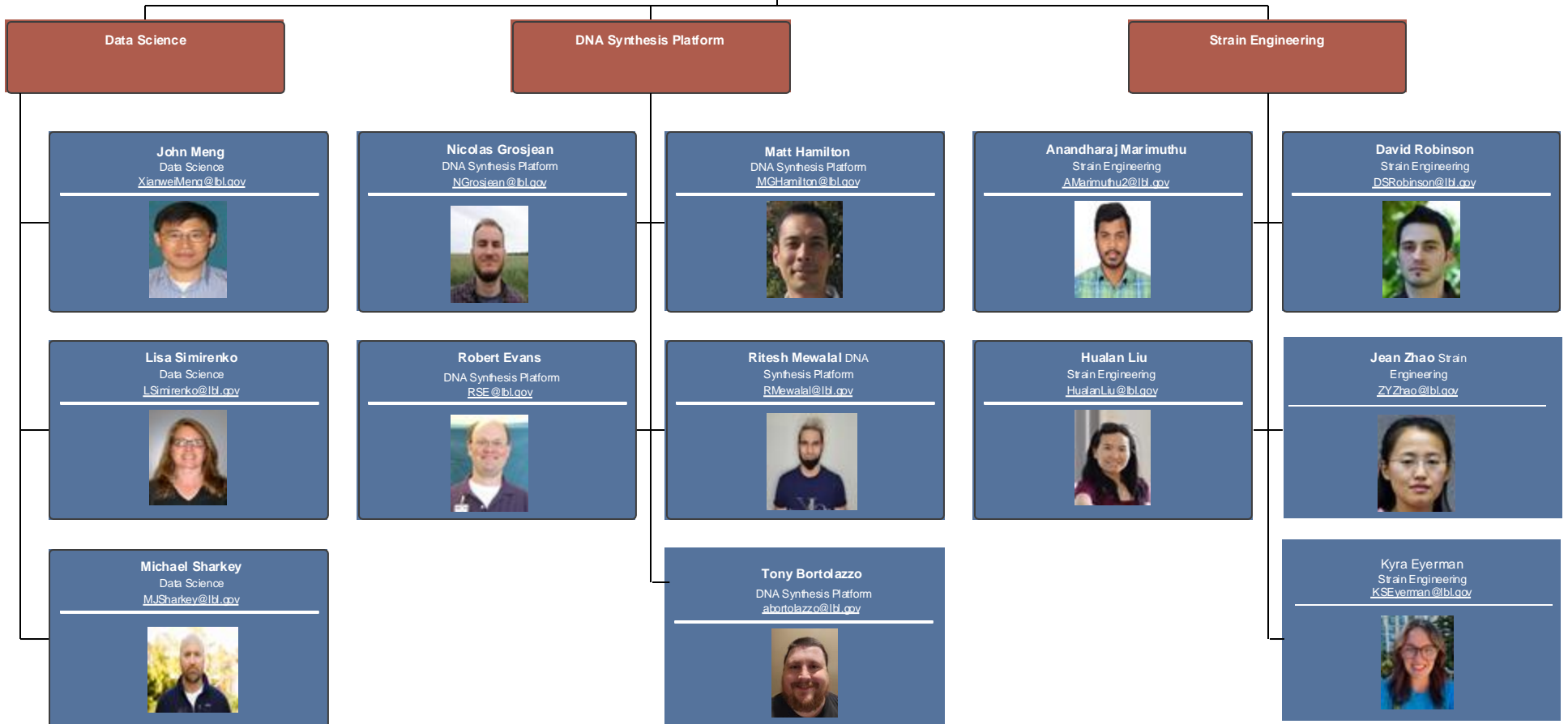


Genome Analysis (Fungal / Microbial / Metagenome)

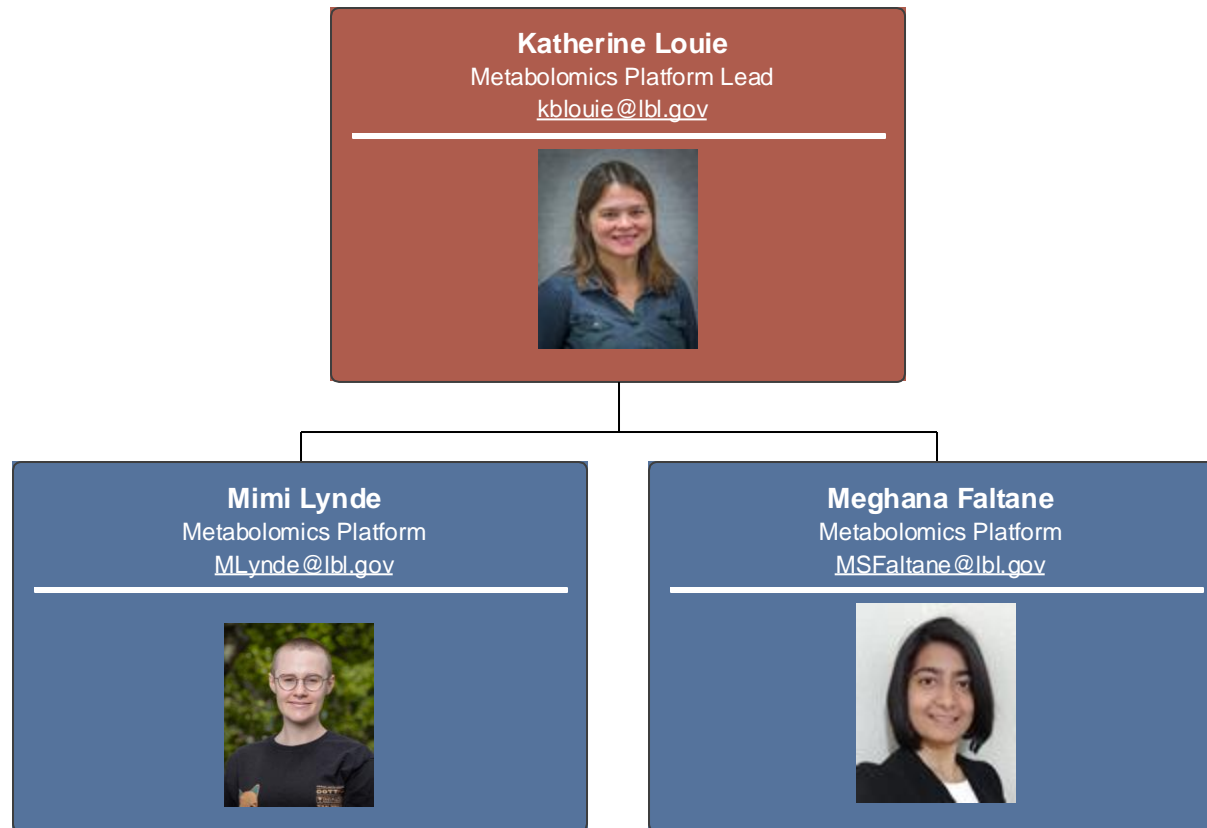


DNA Synthesis Platform

Ian Blaby
DNA Synthesis Platform Lead
IKBlaby@lbl.gov

Metabolomics Platform




Rex Malmstrom
Micro-Scale Applications Lead
RRMalmstrom@lbl.gov




Micro-Scale Applications

Kanwar Singh
Micro-Scale Applications
KSingh@lbl.gov




Danielle Goudeau
Micro-Scale Applications
DGoudeau@lbl.gov



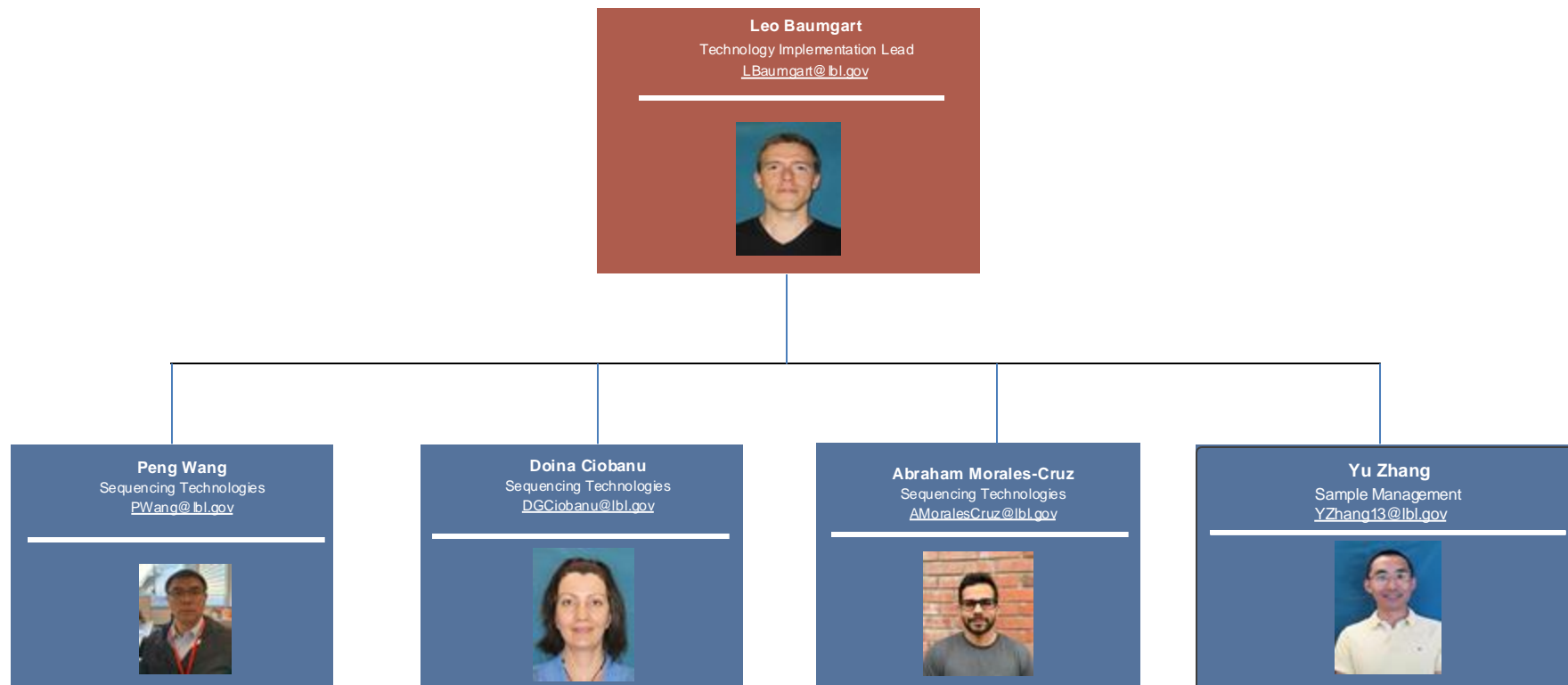
William Kauffman
Micro-Scale Applications
WBKauffman@lbl.gov



Nandita Nath
Micro-Scale Applications
NNath@lbl.gov



Sequencing Technologies




Chris Daum (LLNL)
Sequencing Technologies
CGDaum@lbl.gov




Automated Sample Platforms


Diane Bauer (LLNL)
Automated Sample Platforms
DMBauer@lbl.gov




Emily Savage
Automated Sample Platforms
ESavage@lbl.gov



Mei Wang
Automated Sample Platforms
MWang@lbl.gov




Sravanthi Tejomurthula
Automated Sample Platforms
Stejomurthula@lbl.gov




Illumina Sequencing

Mojgan Amirebrahimi
Illumina Sequencing
MAmirebrahimi@lbl.gov




Raymond Lee
Illumina Sequencing
RLee2@lbl.gov



PacBio Sequencing

Joanne Eichenberger
PacBio Sequencing
JEichenb@lbl.gov




Mi Yan
PacBio Sequencing
MYan@lbl.gov



Christine Naca
Resource Management / NTI
CLNaca@lbl.gov



Jenifer Johnson R&D
Resource Manager
JKaplan@lbl.gov



Matt Zane (LLNL)
Sequencing Platforms
MCZane@lbl.gov



Sample Preparations Technology


Yuko Yoshinaga
Sample Preparation Technology Lead
YYoshinaga@lbl.gov



Library Creation

Sample Management

Hope Hundley (LLNL)
Library Creation
HNTice@lbl.gov



Guifen He
Library Creation
GHe@lbl.gov



Kathleen Lail
Sample Management
KLail@lbl.gov



Juying Yan
Sample Management
JuyingYan@lbl.gov




Maxim Koriabine
Library Creation
MKoriabine@lbl.gov



Mansi Chovatia
Library Creation
MRChovatia@lbl.gov



Siyoun Lee
Sample Management
Lsiyoun@lbl.gov




Keykhosrow Keymanesh
Sample Management
KKeymanesh@lbl.gov

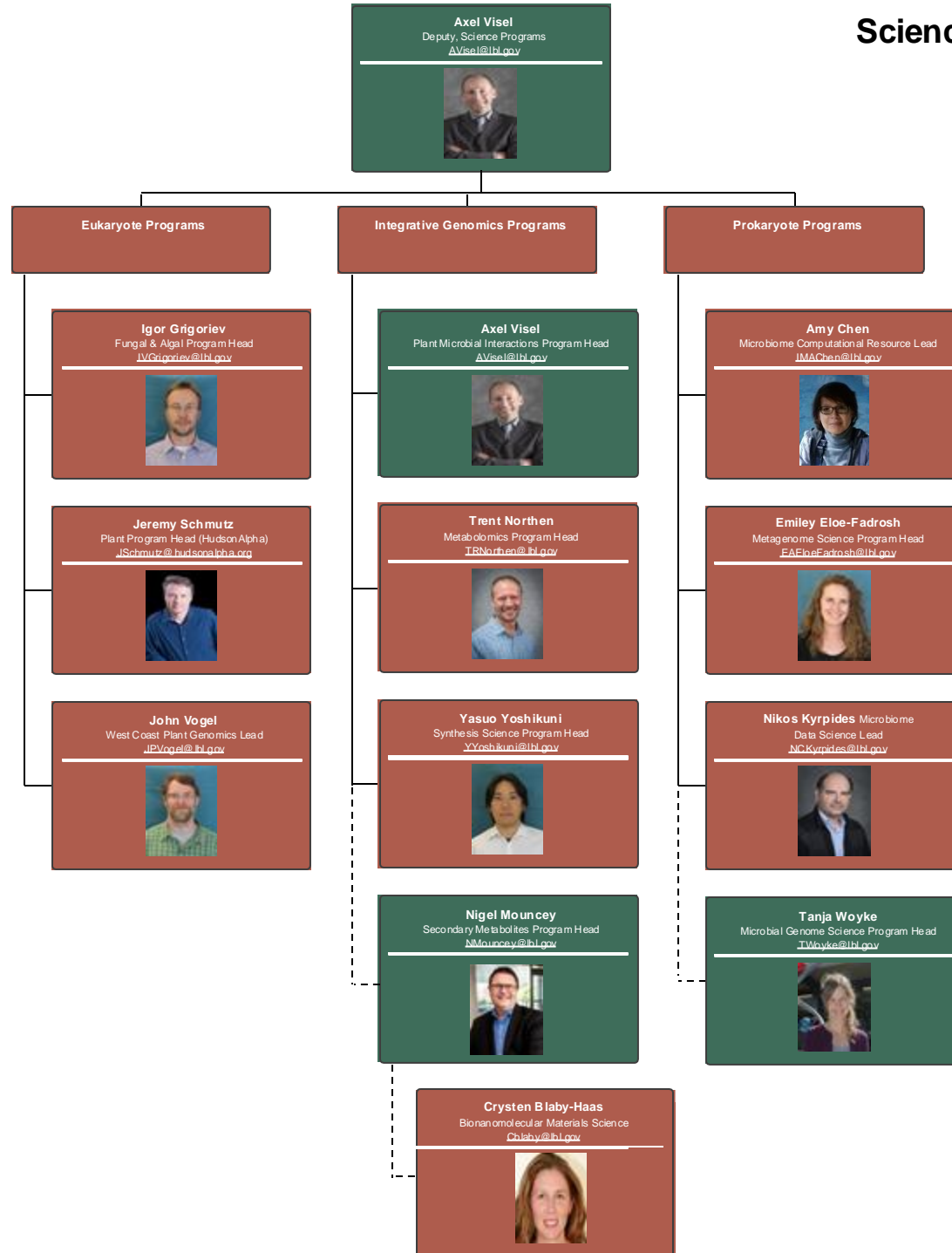


Navneet Kaur
Library Construction
Nkaur@lbl.gov



Jonathan Del Rosario
Sample Management
jadelrosario@lbl.gov





Fungal & Algal Science Program


Igor Grigoriev
Fungal & Algal Program Head
IVGrigoriev@lbl.gov



Alan Kuo
Fungal & Algal Program
AKuo@lbl.gov



Bishoy Kamel Fungal & Algal Program
BSKamel@lbl.gov



Igor Shabalov
MycCosm / PhycoCosm Lead
IShabalov@lbl.gov



Sara Calhoun Fungal & Algal Program
SECalhoun@lbl.gov



Asaf Salamov Fungal & Algal Program
AASalamov@lbl.gov



Richard Hayes
Fungal & Algal Program
RDHayes@lbl.gov



Alexander Swafford
MycCosm / PhycoCosm
APSwafford@lbl.gov



Igor Lukashin
MycCosm / PhycoCosm
ILukashin@lbl.gov




Vy Duong
Fungal & Algal Program
VDuong@lbl.gov



Steven Ahrendt
Fungal & Algal Program
SAhrendt@lbl.gov



Stephen Mondo
Fungal & Algal Program
SJMondo@lbl.gov



Roman Nikitin
Fungal & Algal Program
RNikitin@lbl.gov



Serge Dusheyko
MycCosm / PhycoCosm
SDusheyko@lbl.gov



Sajeet Haridas
Fungal & Algal Program
SHaridas@lbl.gov




Tina Melle
Fungal & Algal Program
Mele@lbl.gov




Jeremy Schmutz
 Plant Program Head (HudsonAlpha)
JSchmutz@hudsonalpha.org




Ada Stewart
 Sequencing Lead




Jane Grimwood
 Library Construction




Jerry Jenkins
 Genome Analysis



Mike Frizzell
 Core Informatics




Jessica Stephens
 Sequencing



Jenell Webber
 Library Construction



Adam Healey
 Genome Analysis



Avinash Sreedasyam
 Genome Analysis




Dave Flowers
 Core Informatics



Kevin Wu
 Sequencing




Latonya Moore
 Library Construction




Christopher Plott
 Genome Analysis




John Lovell
 Genome Analysis




Ming Tsai
 Core Informatics




Teresa Jones
 Sequencing




Lori Boston
 Library Construction



Lori Handley
 Genome Analysis



Min Kim
 Genome Analysis




Melissa Williams
 Library Construction



Paul Grabowski
 Genome Analysis



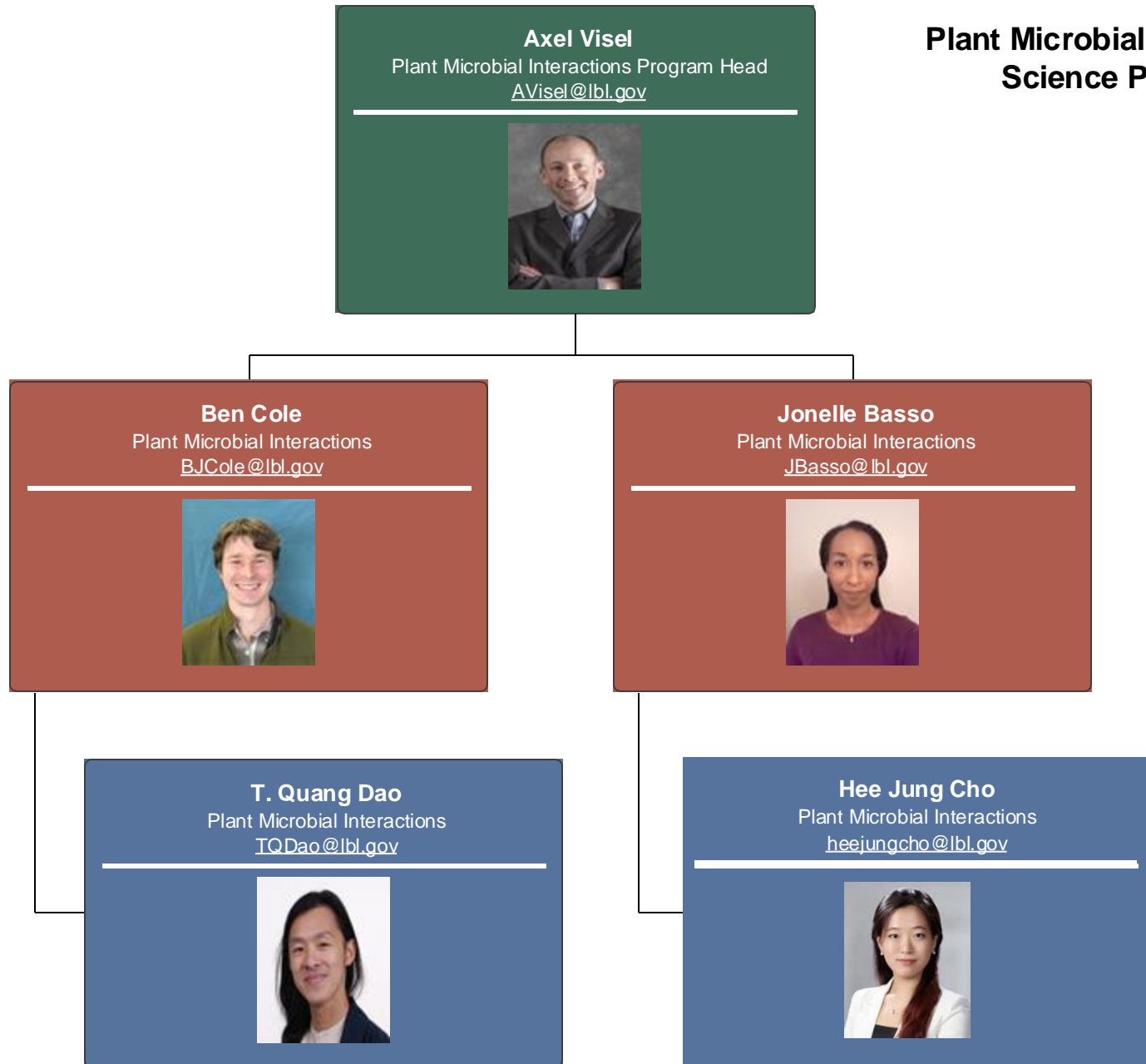
Sujan Mamadi
 Genome Analysis



Shannon Talley
 Library Construction



Plant Microbial Interactions Science Program




West Coast Plant Genomics

John Vogel
West Coast Plant Genomics Lead
JVogel@lbl.gov



Plant Functional Genomics


Daniel Rokhsar
Computational Genomics Lead
DRokhsar@lbl.gov



David Goodstein
Plant Comparative Analysis Lead
DMGoodstein@lbl.gov



Bradie Lee
Plant Functional Genomics
Bradie.lee@lbl.gov




Max Miao
Plant Functional Genomics
M.Miao@lbl.gov




Guohong Wu
Computational Genomics
GWu@lbl.gov



Jeremy Phillips
Plant Comparative Analysis
J.Phillips@lbl.gov




Nathan Berkowitz
Plant Comparative Analysis
nberkowitz@lbl.gov




Lifeng Liu
Plant Functional Genomics
Lifeng.Liu@lbl.gov




Yi Zhai
Plant Functional Genomics
Y.Zhai@lbl.gov




Jessen Bredeson
Computational Genomics
Jbredeson@lbl.gov




Patrick Davidson
Plant Comparative Analysis
PDavidson@lbl.gov



Sumaira Zaman
Plant Comparative Analysis
SZaman@lbl.gov




Mingqin Shao
Plant Functional Genomics
Mingqin.Shao@lbl.gov




Li Lei
Plant Functional Genomics
L.Lei@lbl.gov



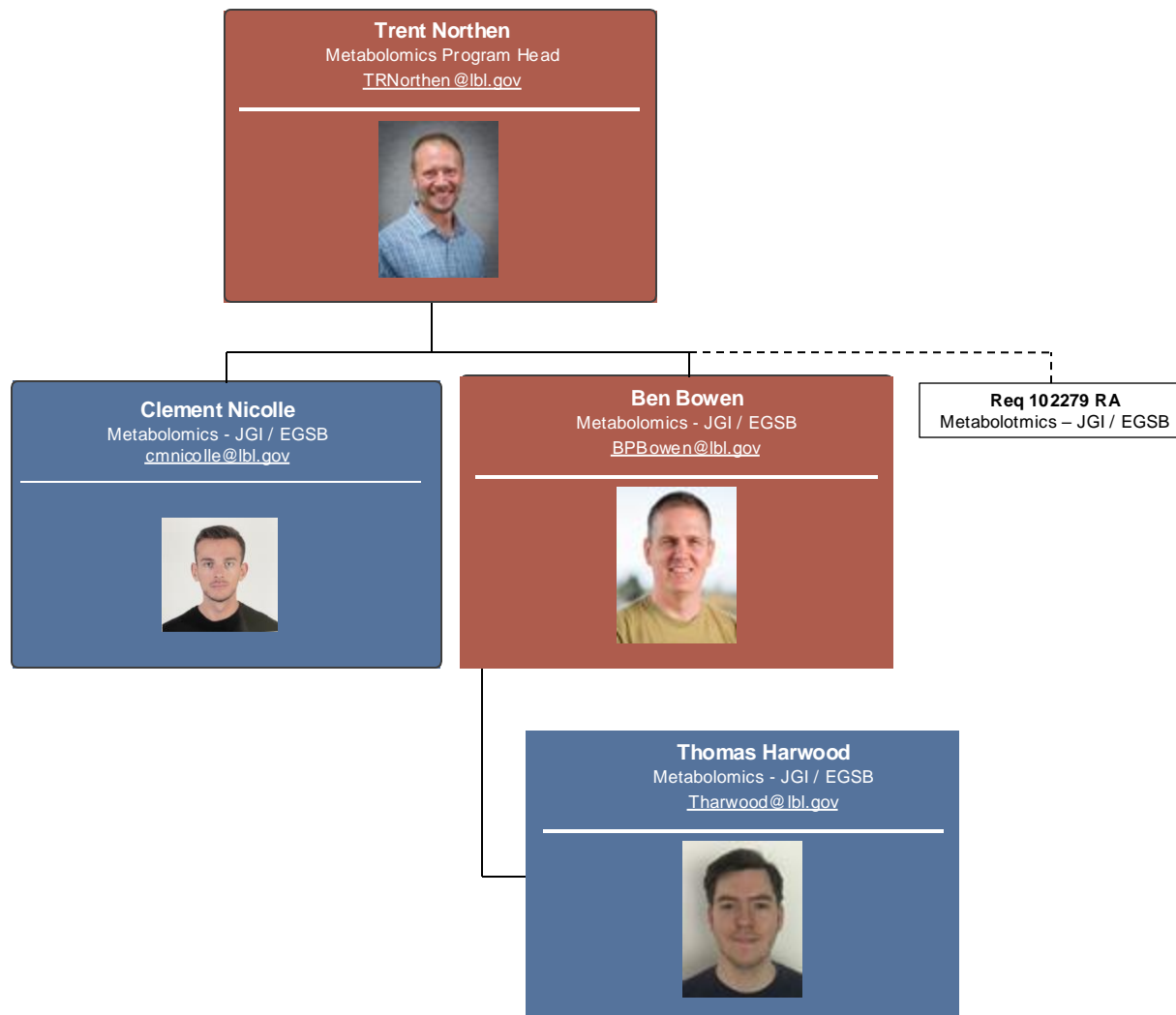
Tomas Bruna
Plant Comparative Analysis
Tbruna@lbl.gov



Bliss Beernink
Plant Functional Genomics
Bjss@lbl.gov



Metabolomics Science Program



Synthesis Science User Program

Yasuo Yoshikuni

Synthesis Science Program Head
YYoshikuni@lbl.gov



Dung Hoang Anh Mai

Synthesis Science User Program
dhmai@lbl.gov



Qurrat ul ain Rana

Synthesis Science User Program
QuRana@lbl.gov



Tomoya Honda

Synthesis Science User Program
THonda@lbl.gov



Nam Pham (Ezio)

Synthesis Science User Program
npham@lbl.gov

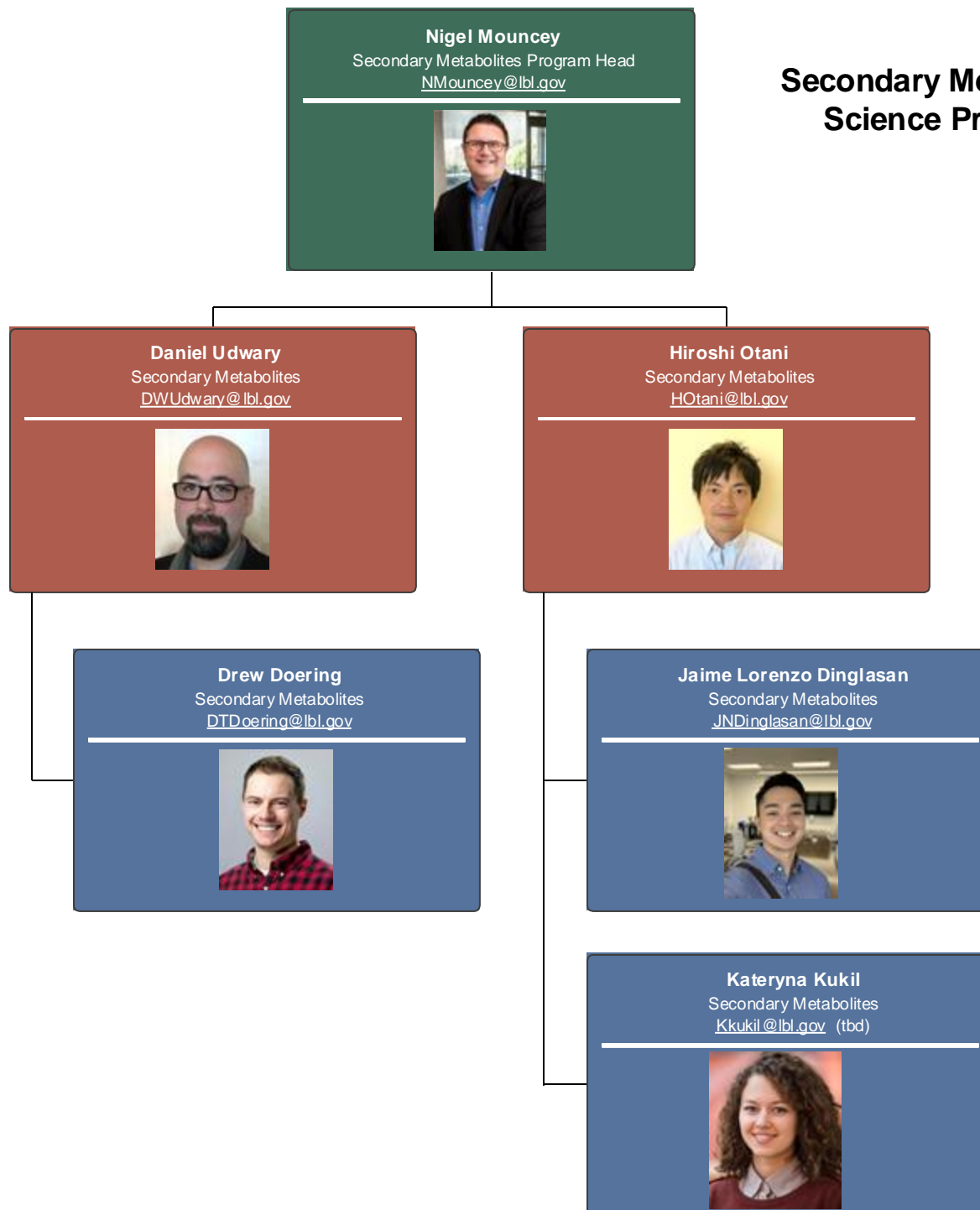


Hiroya Oka

Synthesis Science User Program
hoka@lbl.gov



Secondary Metabolites Science Program



Nigel Mouncey
Bionanomolecular Materials Science
NMouncey@lbl.gov




Bionanomolecular Materials Science


Crysten Blaby-Haas
Bionanomolecular Materials Science
Cblaby@lbl.gov

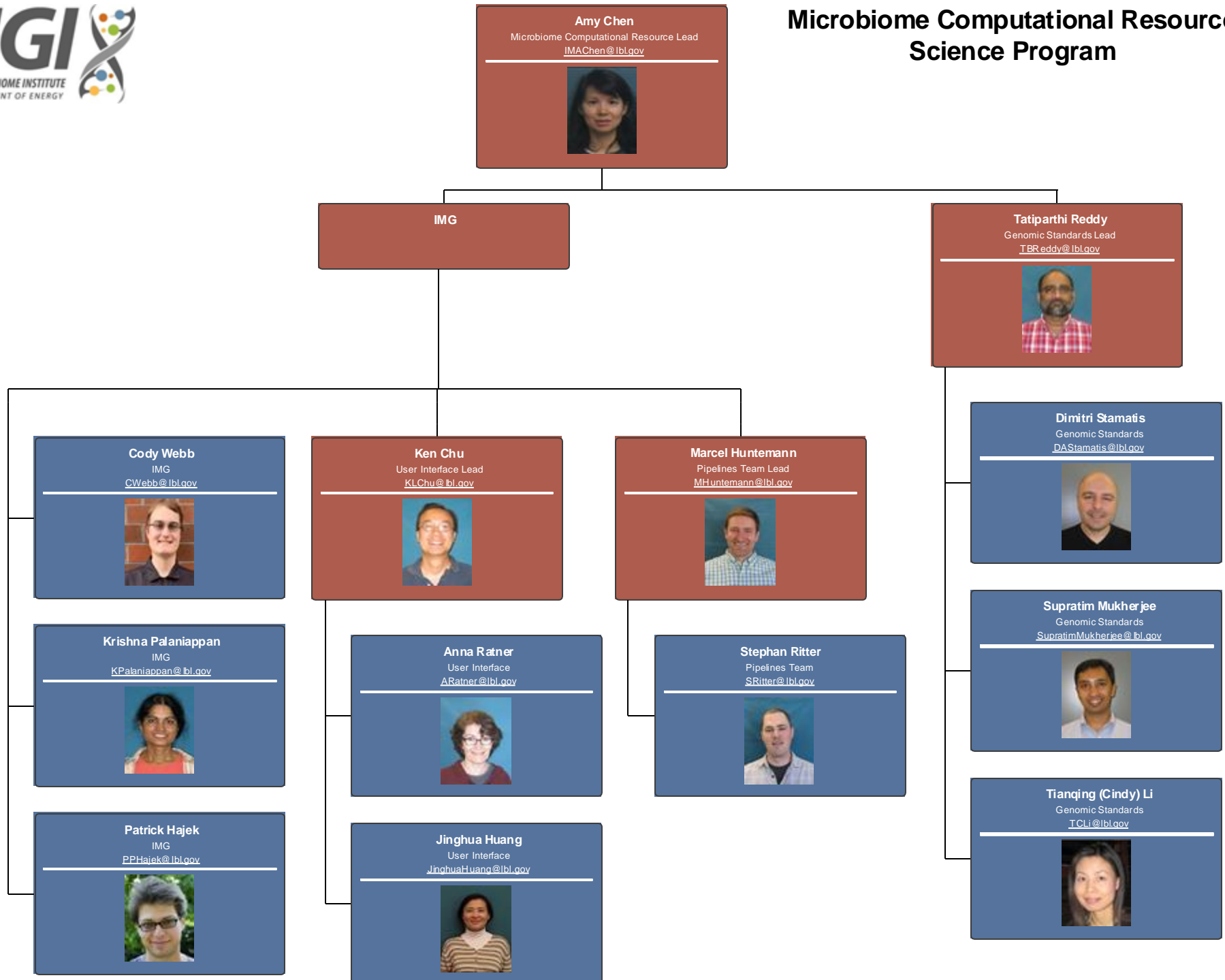


Bikash Shrestha
Bionanomolecular Materials Science
Bshrestha@lbl.gov




Ping Chang
Bionanomolecular Materials Science
greenfavor@lbl.gov





Microbiome Data Science Program


Nikos Kyrpides
Microbiome Data Science Lead
NCKyrpides@lbl.gov



Antonio Camargo
Microbiome Data Science
antoniop.camargo@lbl.gov




Brayon Fremin
Microbiome Data Science
Bfremin@lbl.gov




Natalia Ivanova
Functional Annotation Lead
NNIvanova@lbl.gov



Eric Olo Ndela
Microbiome Data Science
eolondela@lbl.gov



Mateus Bernabe Flamenghi
Microbiome Data Science
mbfiamenghi@lbl.gov




Dongying Wu
Functional Annotation
DongyingWu@lbl.gov



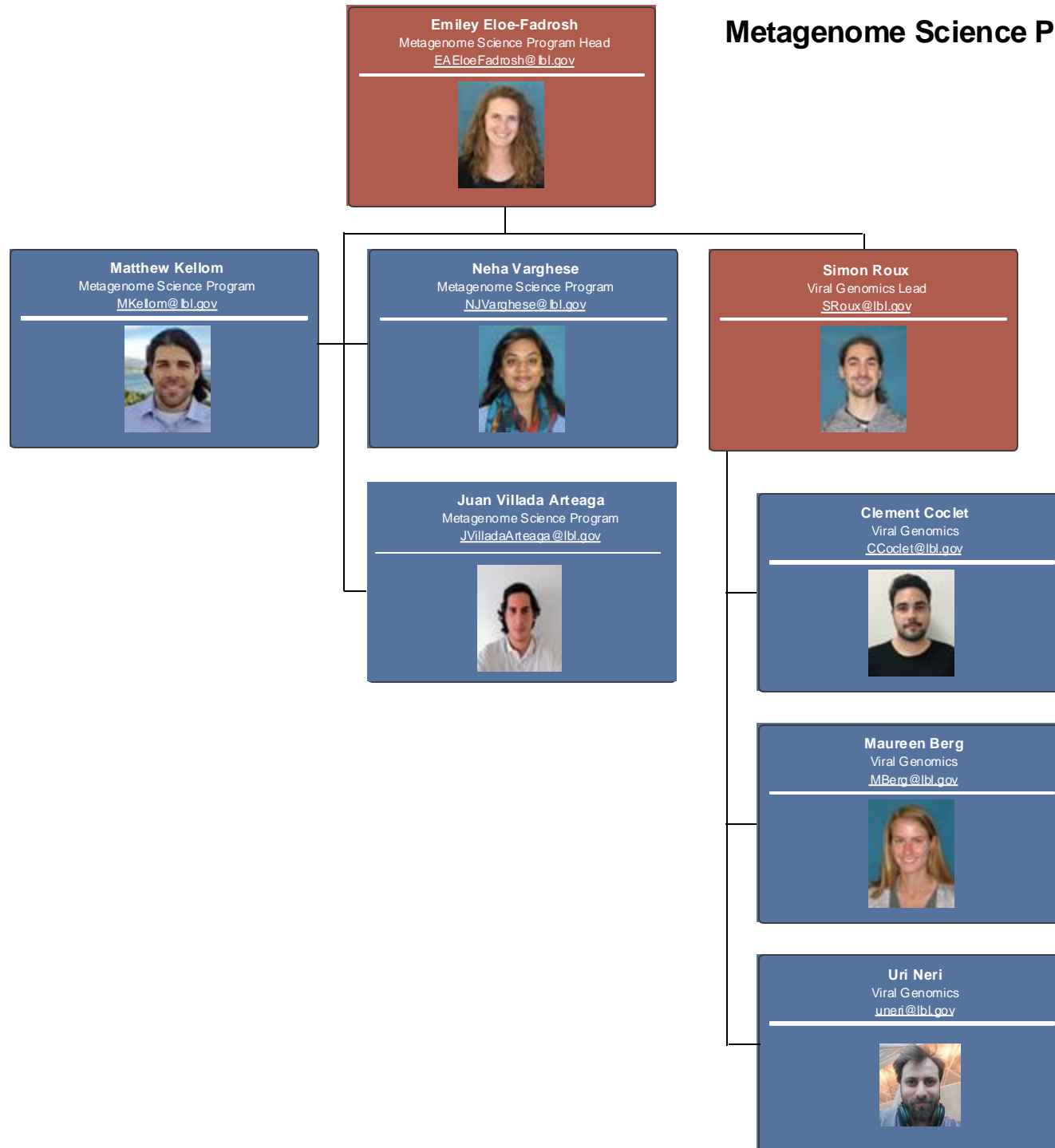
Galina Ovchinnikova
Functional Annotation
GOvchinnikova@lbl.gov



Rekha Seshadri
Functional Annotation
RSeshadri@lbl.gov




Metagenome Science Program



Microbial Genome Science Program


Tanja Woyke
Microbial Genome Science Program Head
TWoyke@lbl.gov



Single Cell Research

User Project Coordination

Frederik Schulz
New Lineages of Life Lead
FSchulz@lbl.gov



Peter Osborne
Single Cell Research
PCOsborne@lbl.gov




Yumary Vasquez
Single Cell Research
YMVasquez@lbl.gov




Gitta Szabo
User Project Coordination
GSzabo@lbl.gov



Janey Lee
User Project Coordination
JLee2@lbl.gov




Robert Bowers
User Project Coordination
RMBowers@lbl.gov




Miguel Romero Gutierrez
New Lineages of Life
MF RomeroGutierrez@lbl.gov



Tomas Tym
New Lineages of Life
TTym@lbl.gov



Clarence Le
New Lineages of Life
cle2@lbl.gov



Req 102119 PD
New Lineages of Life

Lorenzo Aureli
New Lineages of Life
laureli@lbl.gov




Eva Myskova
New Lineages of Life
emyskova@lbl.gov




User Program

Tanja Woyke Deputy,
User Programs
TWoyke@lbl.gov



Christa Pennacchio
Project Management Lead
CPPennacchio@lbl.gov



Nancy Hammon
Institutional Workflow Analytics Group Lead
NMHammon@lbl.gov



Danielle Graham
Project Management
DGraham@lbl.gov



Kerrie Barry
Project Management
KWBarry@lbl.gov



Natasha Zvenigorodsky-Brown
Institutional Workflow Analytics Group
NBrown@lbl.gov



Neil Patrick Byers
Institutional Workflow Analytics Group
NByers@lbl.gov




Miranda Harmon-Smith (LLNL)
Project Management - LLNL
MLHarmon-Smith@lbl.gov



Tijana Glavina Del Rio
Project Management
TGlavina@lbl.gov



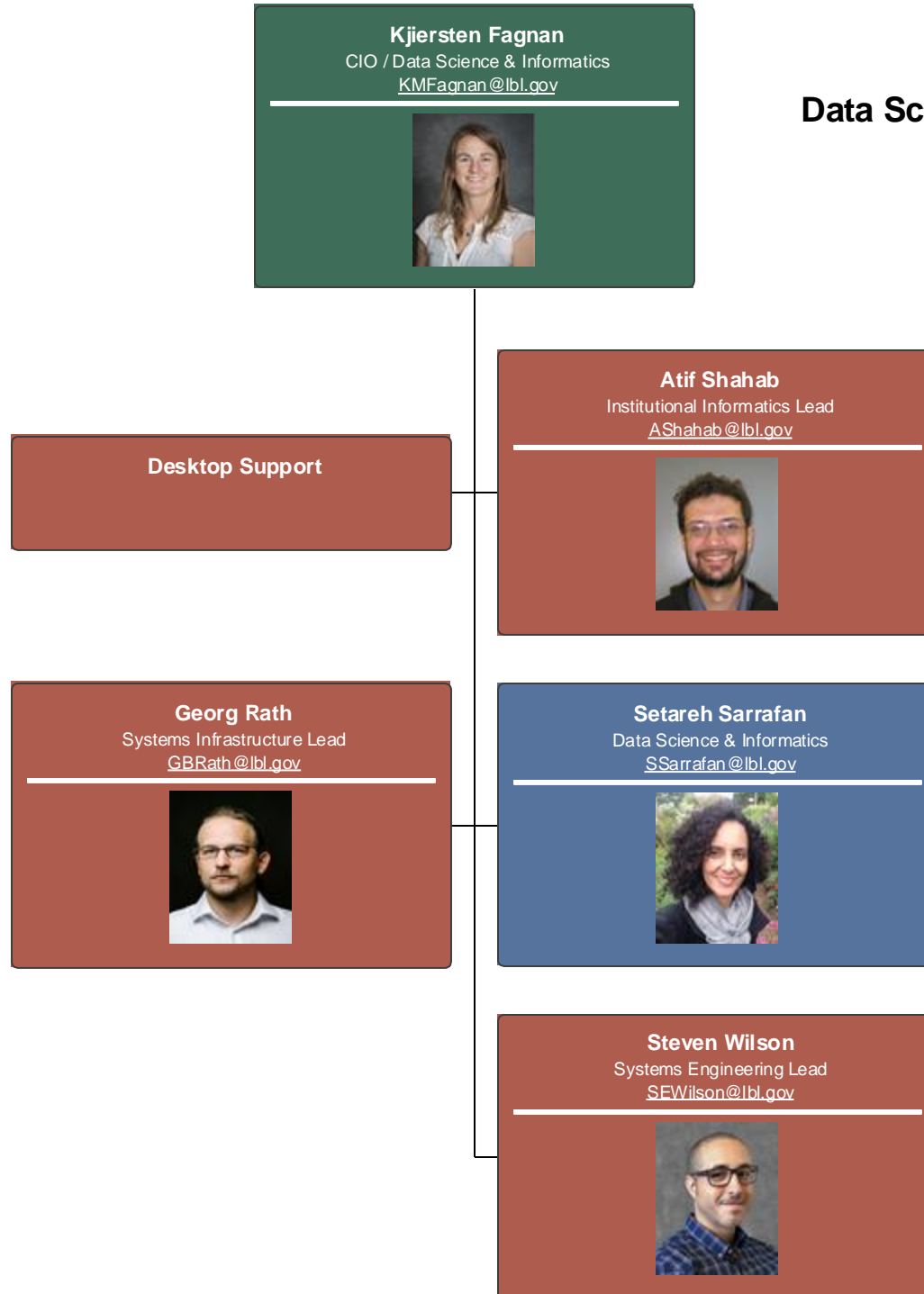
Randy Girsang
Institutional Workflow Analytics Group
RGirsang@lbl.gov



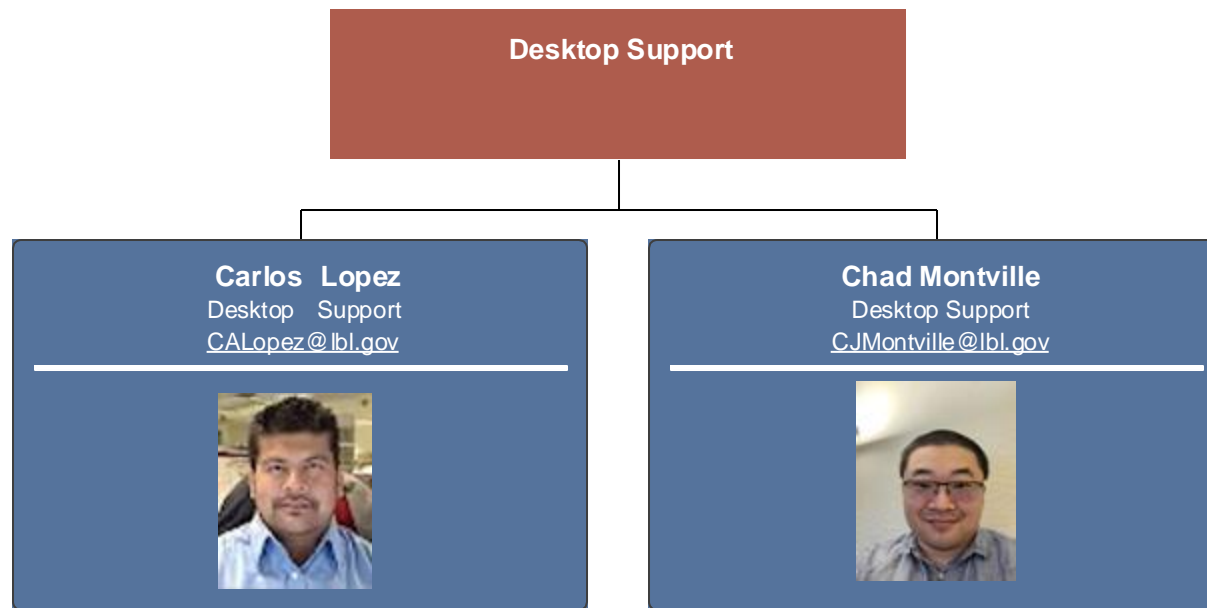
Vivian Ng
Institutional Workflow Analytics Group
VNg@lbl.gov



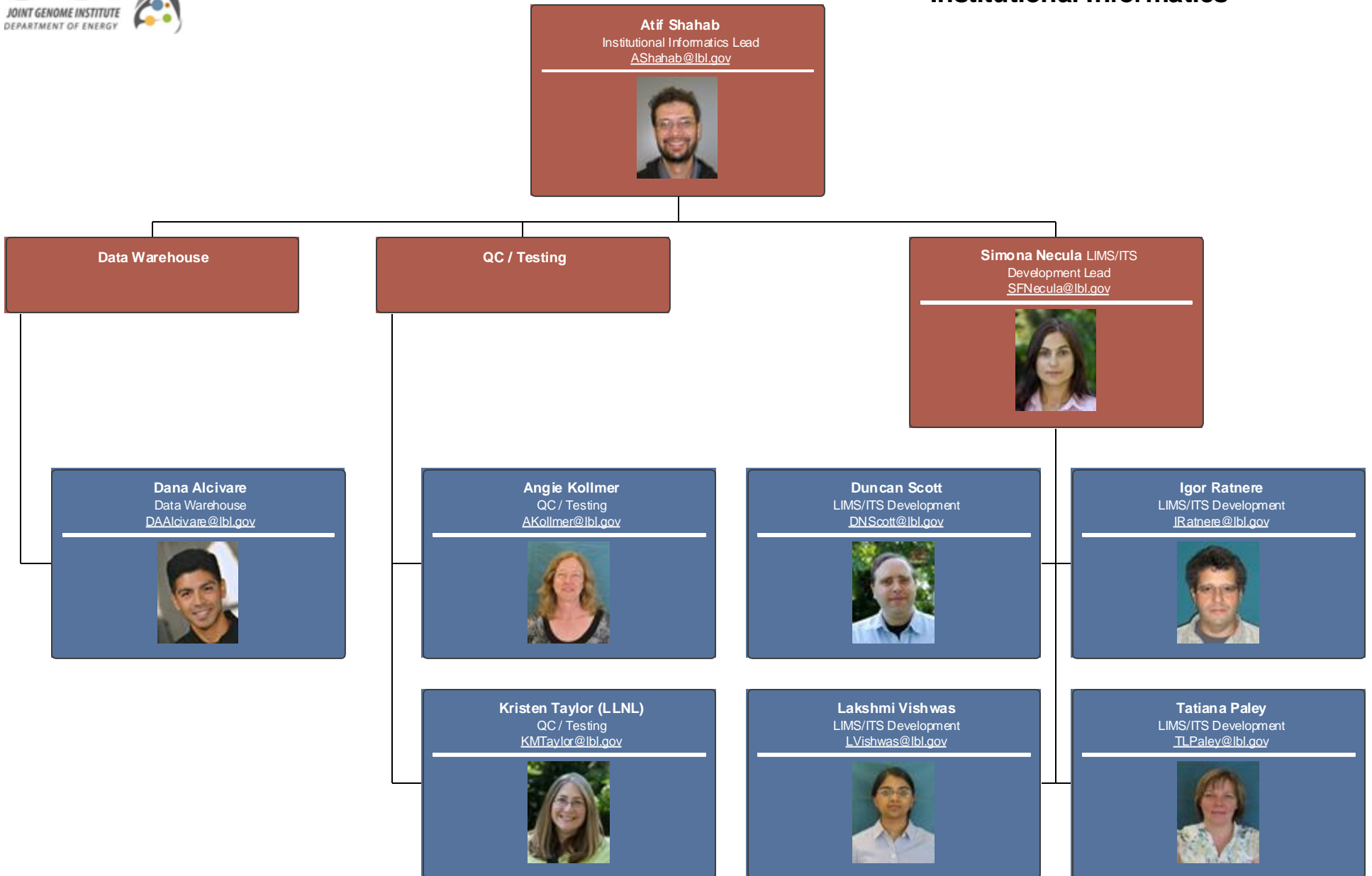
Data Science & Informatics



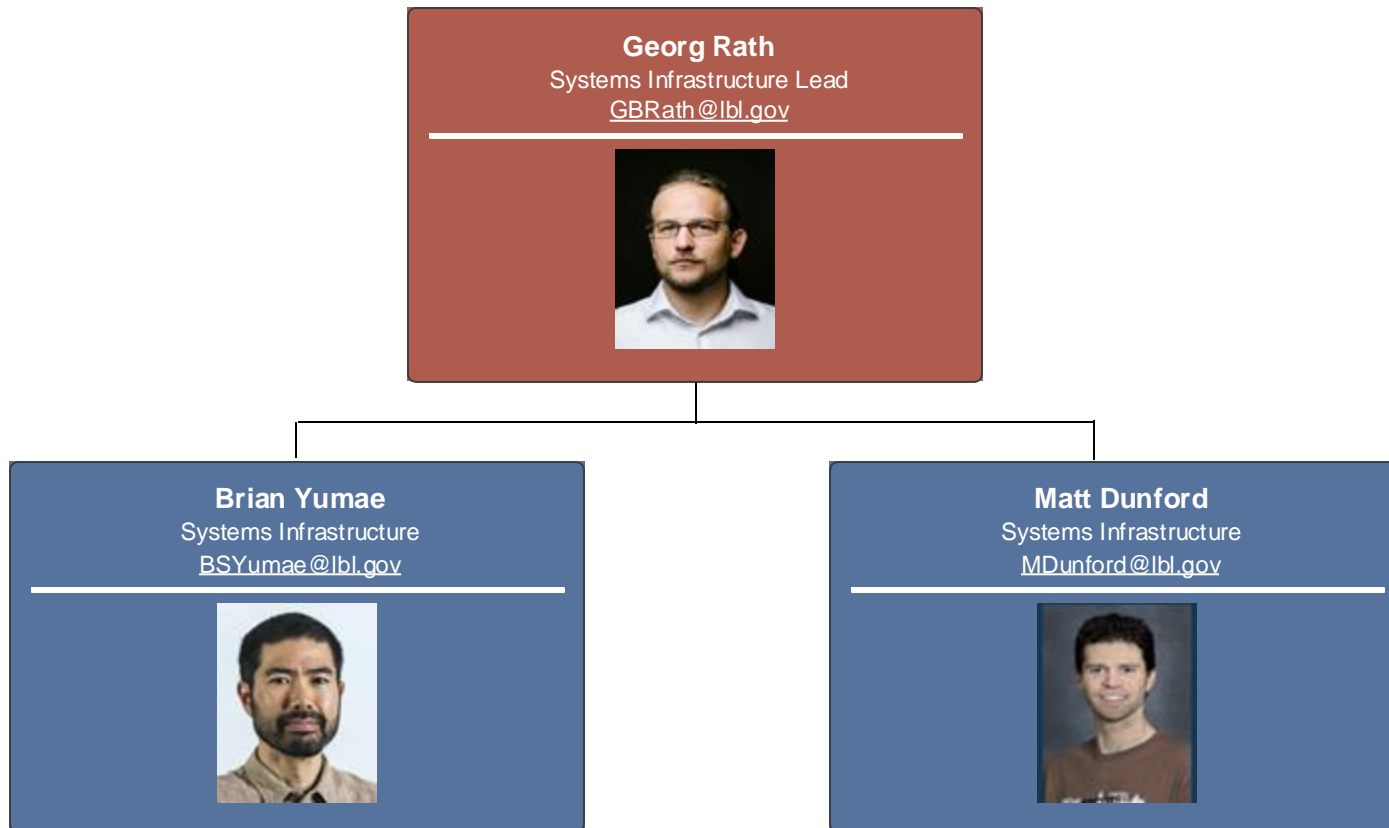
Desktop Support




Institutional Informatics



System Infrastructure



Kjersten Fagnan
CIO / Data Science & Informatics
KMfagnan@lbl.gov



Advanced Analysis

