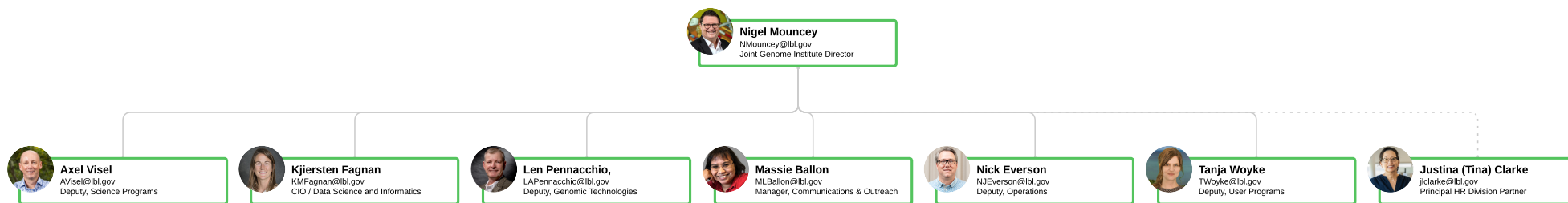
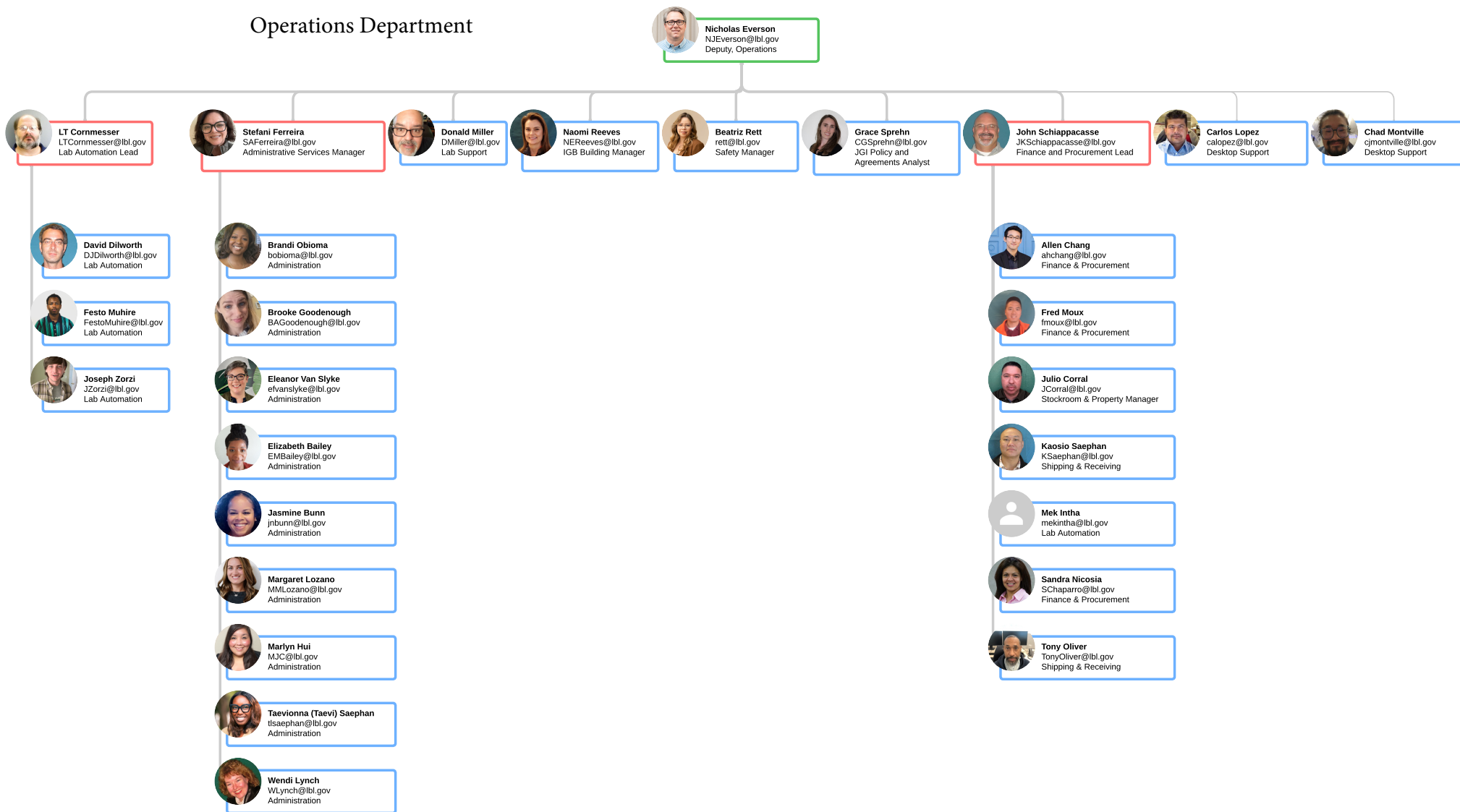


Leadership Team

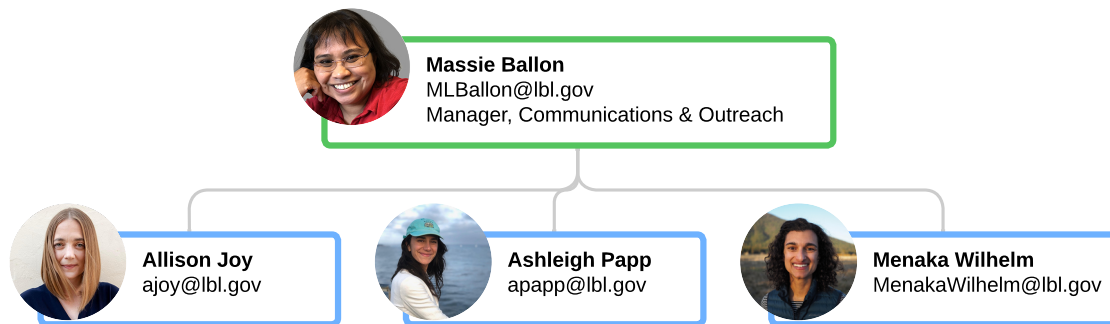


| COLOR LEGEND                |
|-----------------------------|
| Green = JLT                 |
| Red = Supervisor or Manager |
| Blue = Employee             |

## Operations Department



## Communications & Outreach



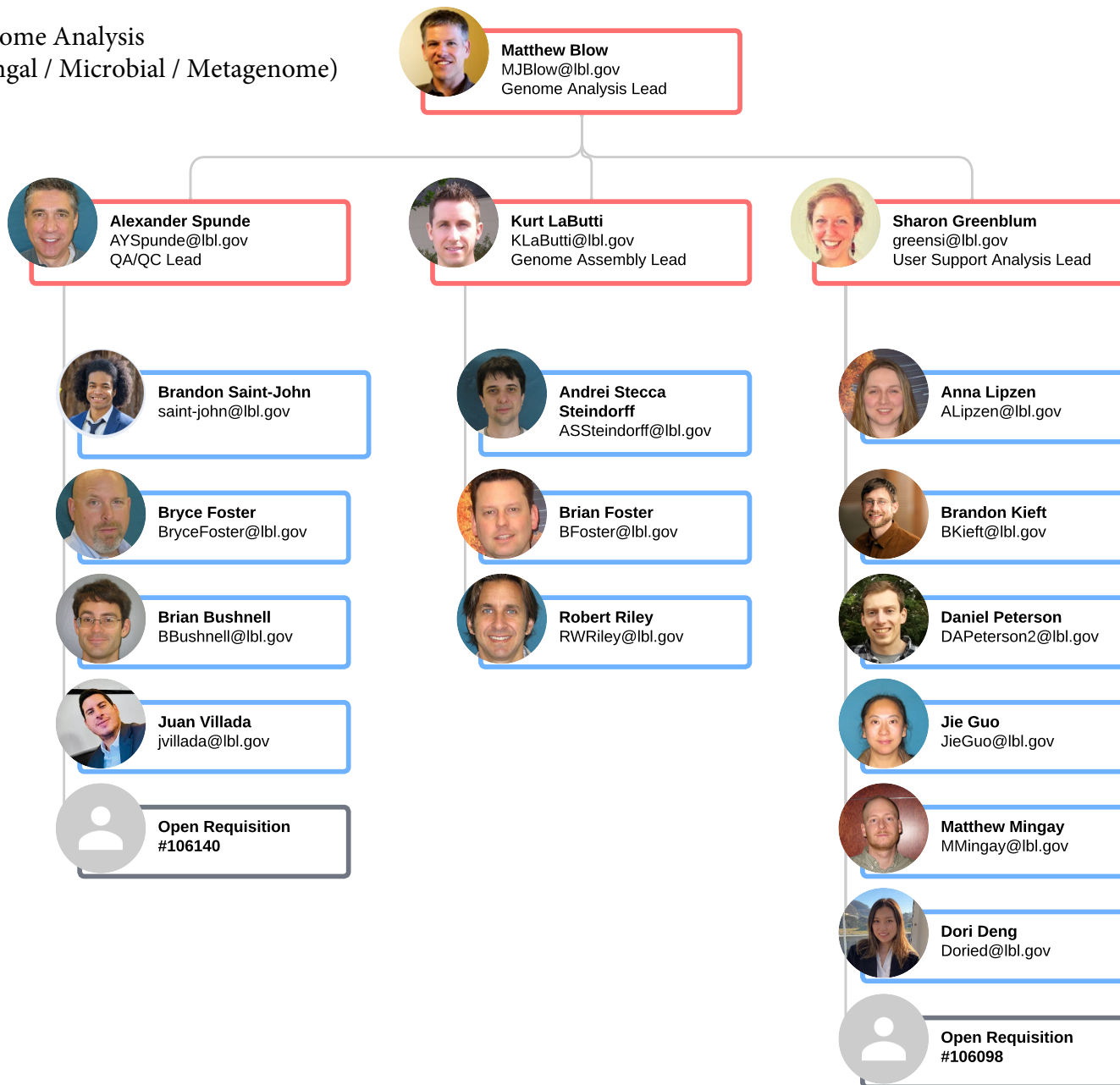
## Human Resources



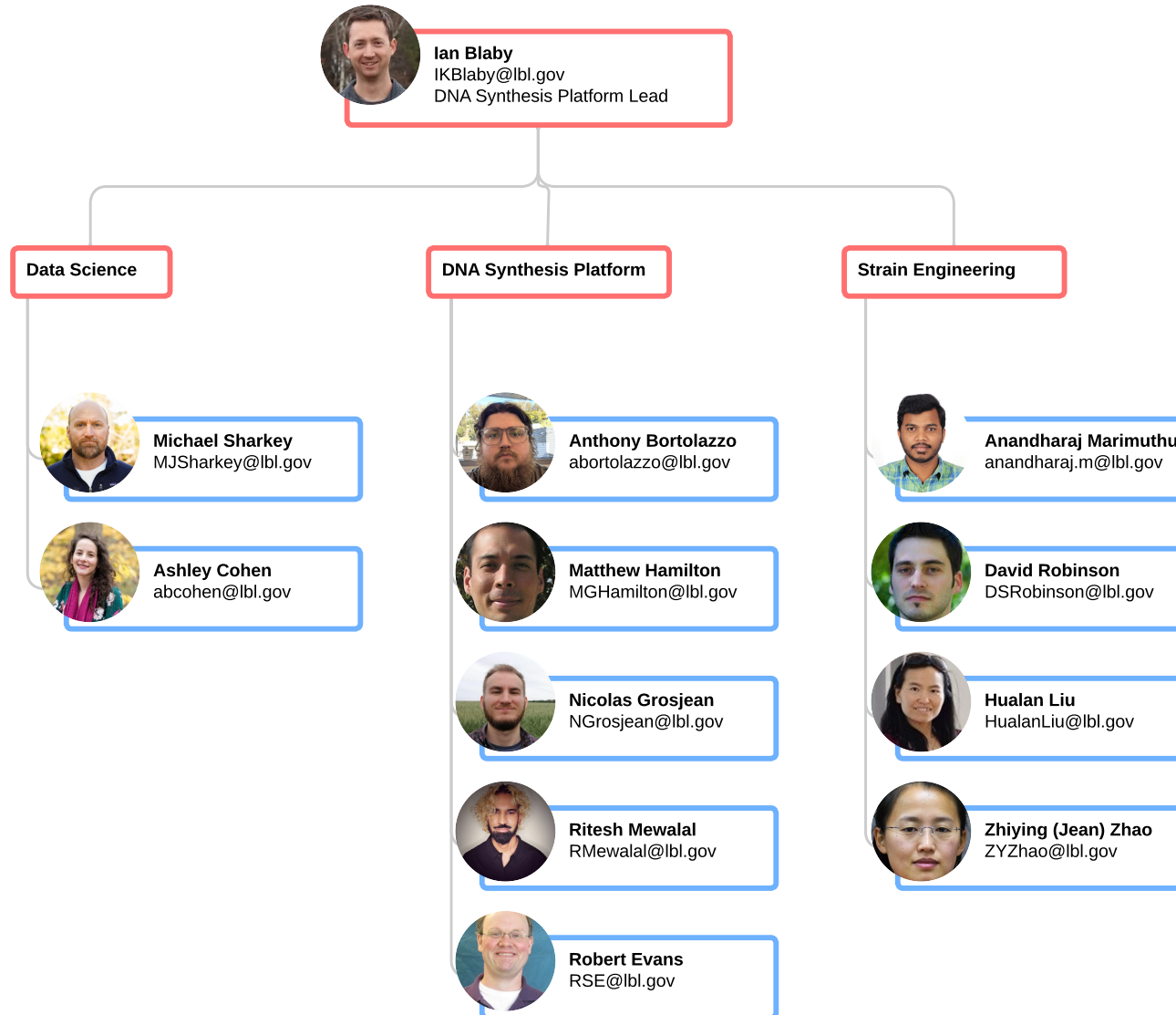
## Genomic Technologies



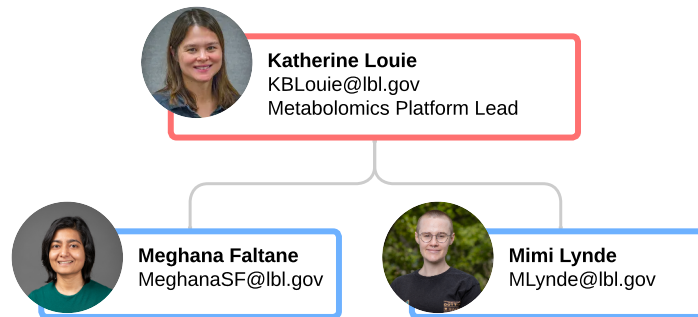
Genome Analysis  
 (Fungal / Microbial / Metagenome)



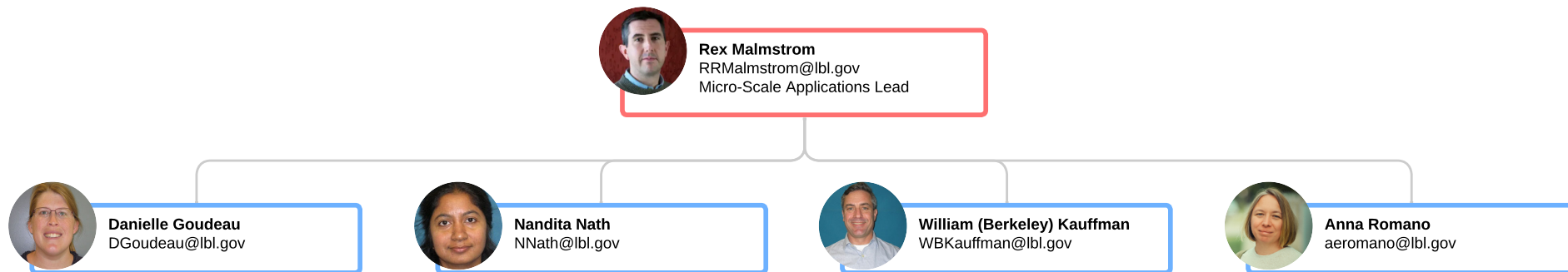
DNA Synthesis Platform



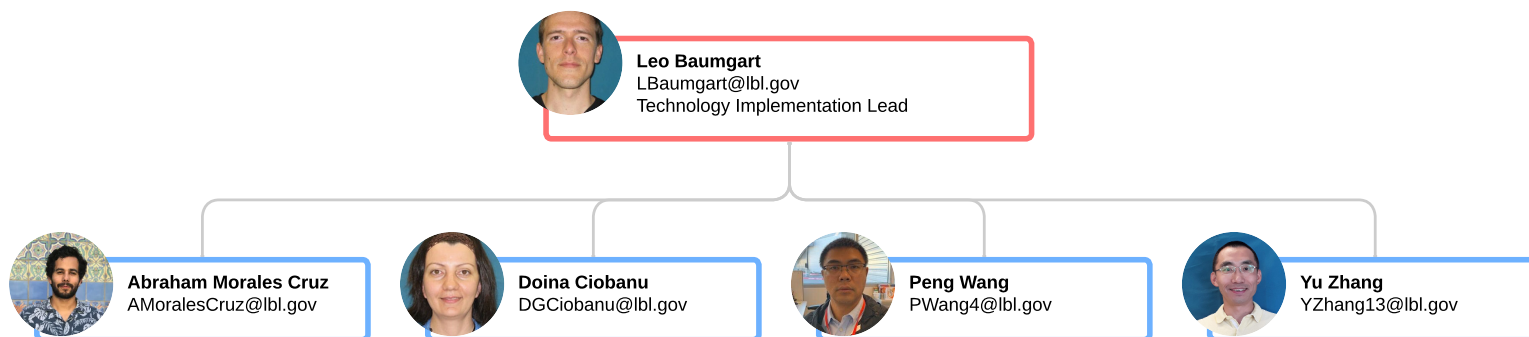
## Metabolomics Platform



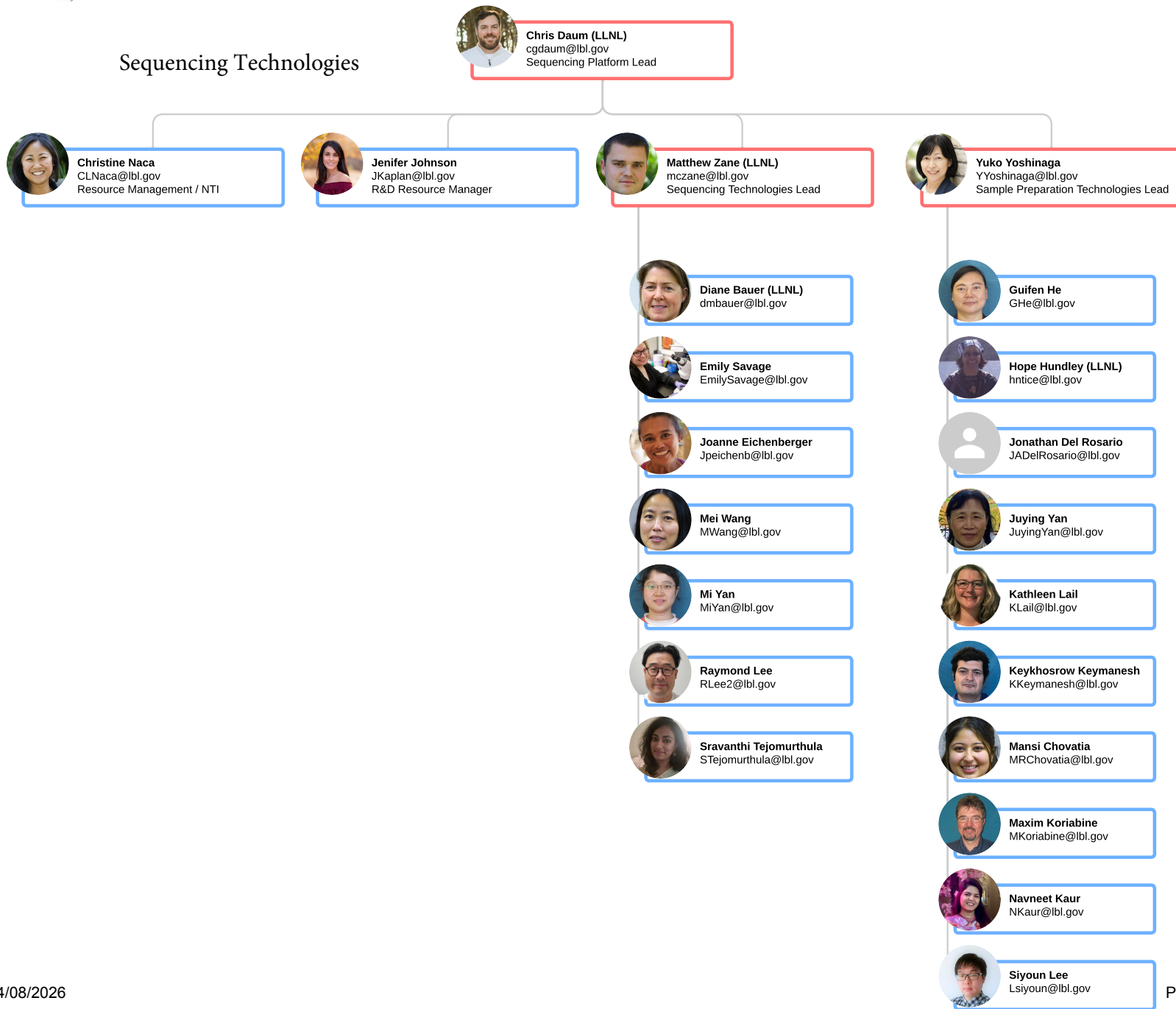
## Micro-Scale Applications




## Sequencing Technologies



## Sequencing Technologies




Science Programs




**Axel Visel**  
AVisel@lbl.gov  
Deputy, Science Programs

Integrative Genomics Programs




**Axel Visel**  
AVisel@lbl.gov  
Plant Microbial Interactions Lead




**Nigel Mouncey**  
NMouncey@lbl.gov  
Secondary Metabolites Program Head



**Trent Northen**  
trnorthen@lbl.gov  
Metabolomics Program Head




**Yasuo Yoshikuni**  
Yoshikuni@lbl.gov  
Synthesis Science Program Head




**Crysten Blaby-Haas**  
cblaby@lbl.gov  
Bionanomolecular Materials Science


Prokaryote Programs



**Emiley Eloe-Fadrosh**  
EAloeFadrosh@lbl.gov  
Metagenome Science Program Head



**Nikos Kyrpides**  
NCKyrpides@lbl.gov  
Microbiome Data Science Lead




**Tanja Woyke**  
TWoyke@lbl.gov  
Microbial Genome Science Program Head


Eukaryote Programs



**Igor Grigoriev**  
IVGrigoriev@lbl.gov  
Fungal & Algal Program Head

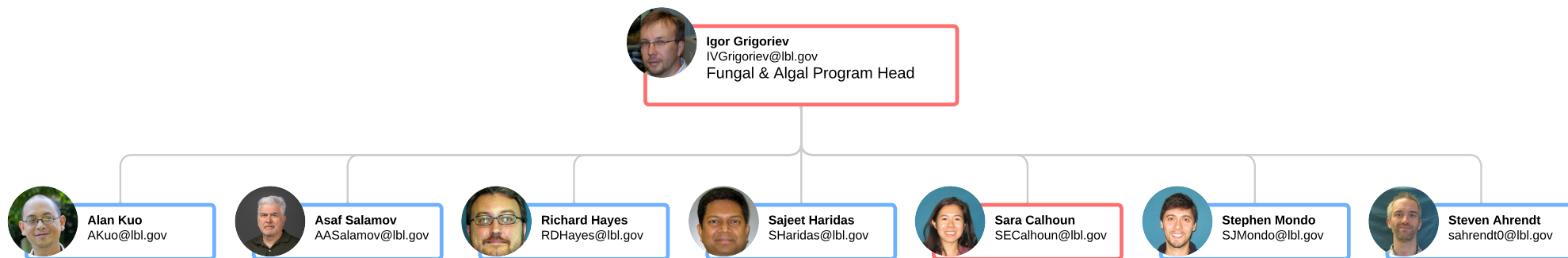


**Jeremy Schmutz**  
jschmutz@hudsonalpha.org  
Plant Program Head (HudsonAlpha)

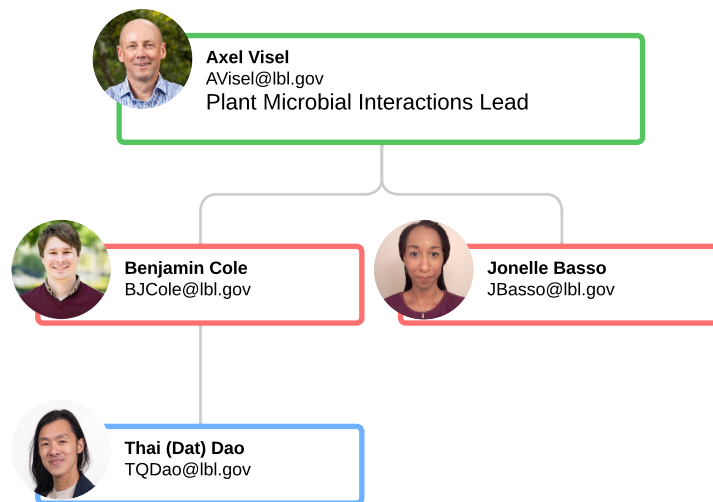


**John Vogel**  
JPVogel@lbl.gov  
West Coast Plant Genomics Lead

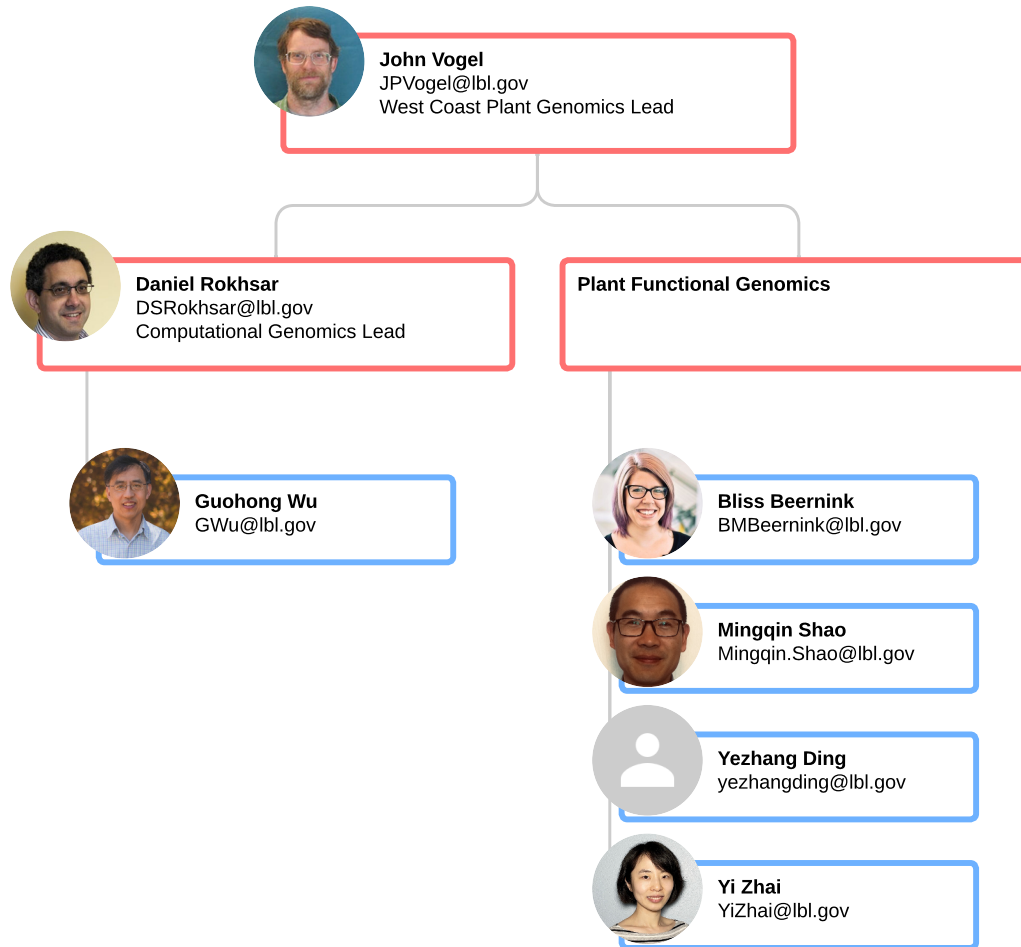
## Fungal & Algal Science Program



## Plant Microbial Interactions Science Program



## West Coast Plant Genomics



## Metabolomics Science Program

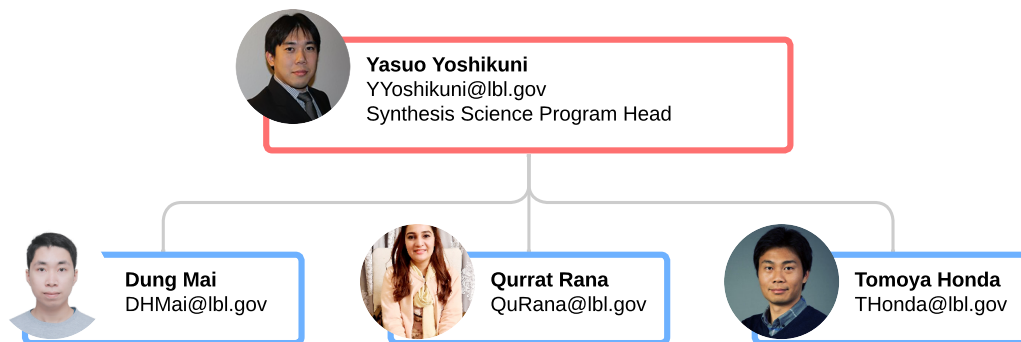


**Trent Northen**  
trnorthen@lbl.gov  
Metabolomics Program Head

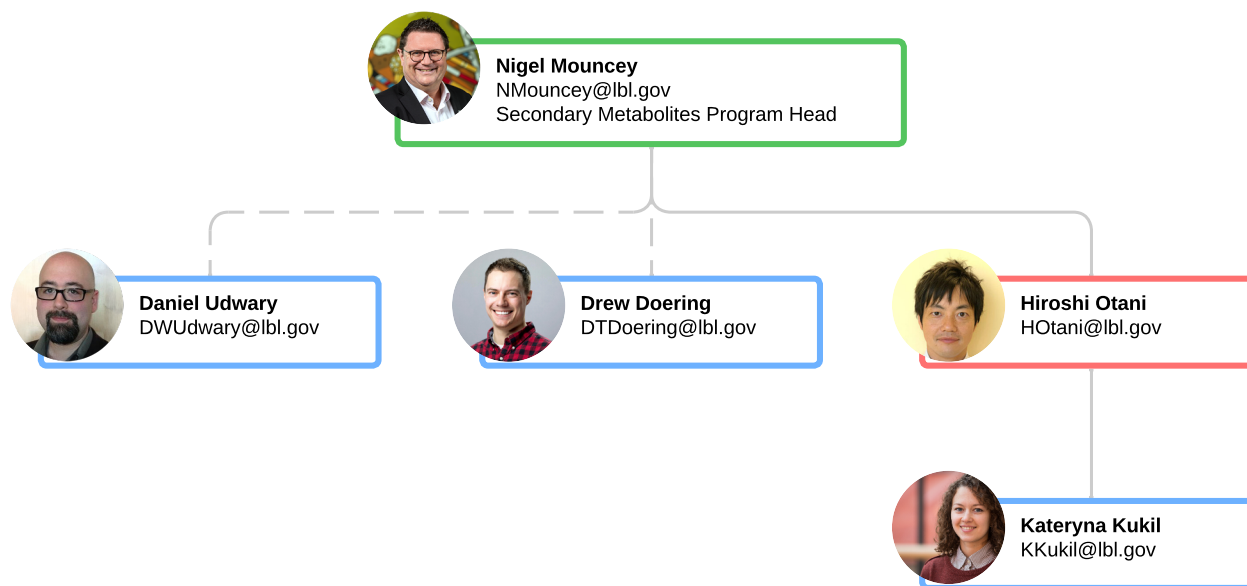


**Ben Bowen**  
bpbowen@lbl.gov

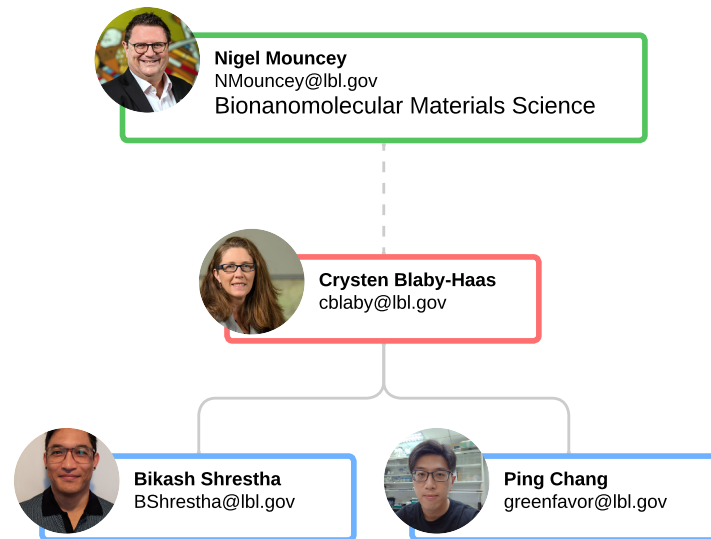
## Synthesis Science User Program



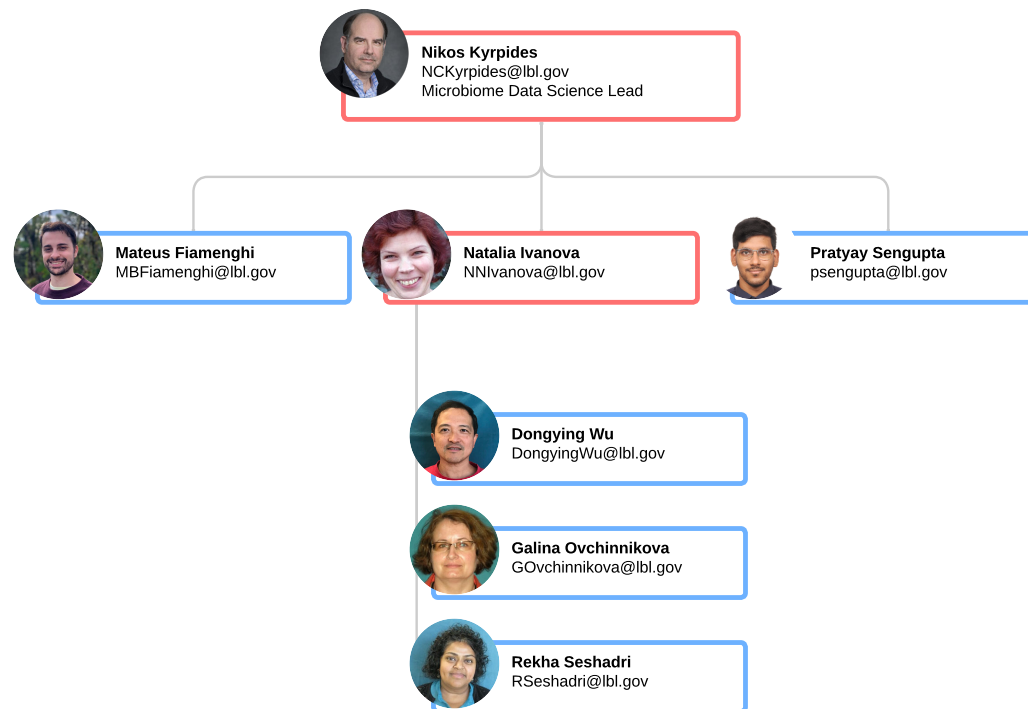
## Secondary Metabolites Science Program



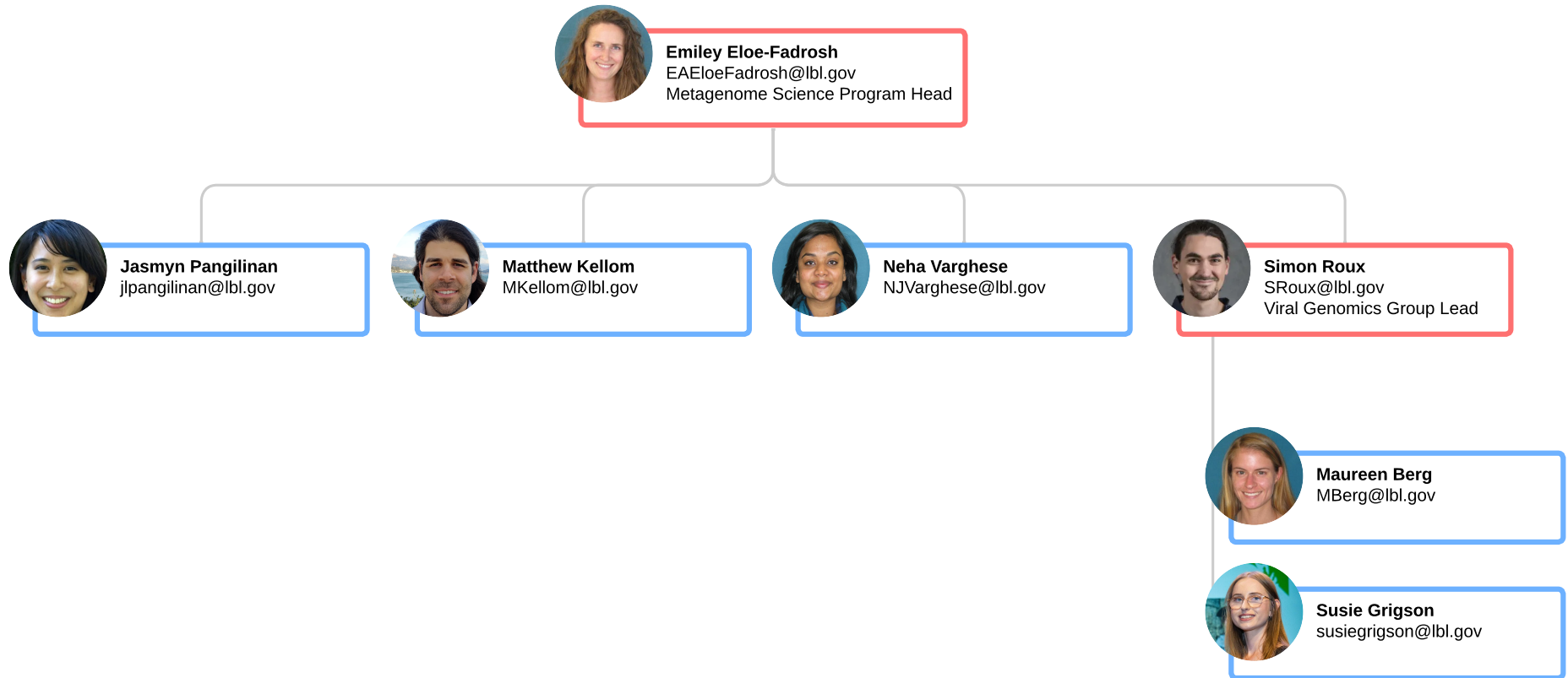
Bionanomolecular Materials Science



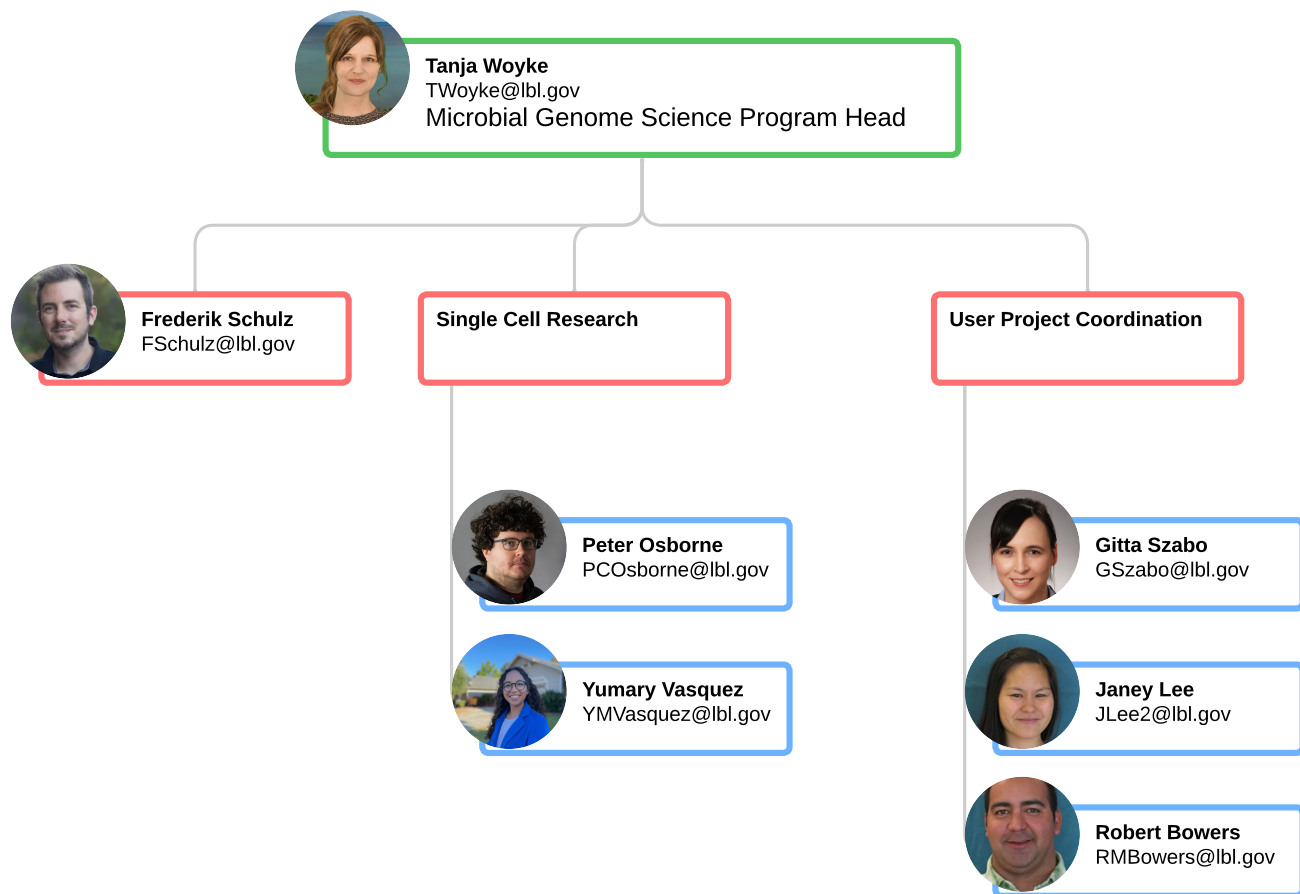
## Microbiome Data Science Program



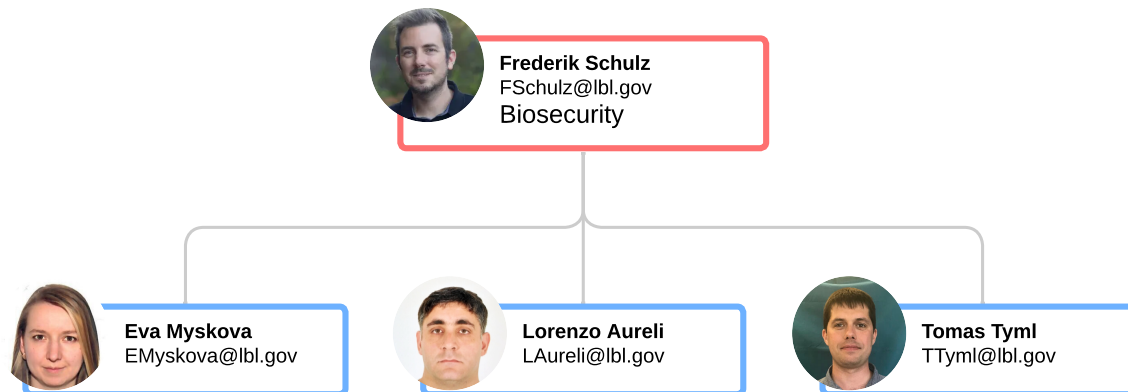
## Metagenome Science Program



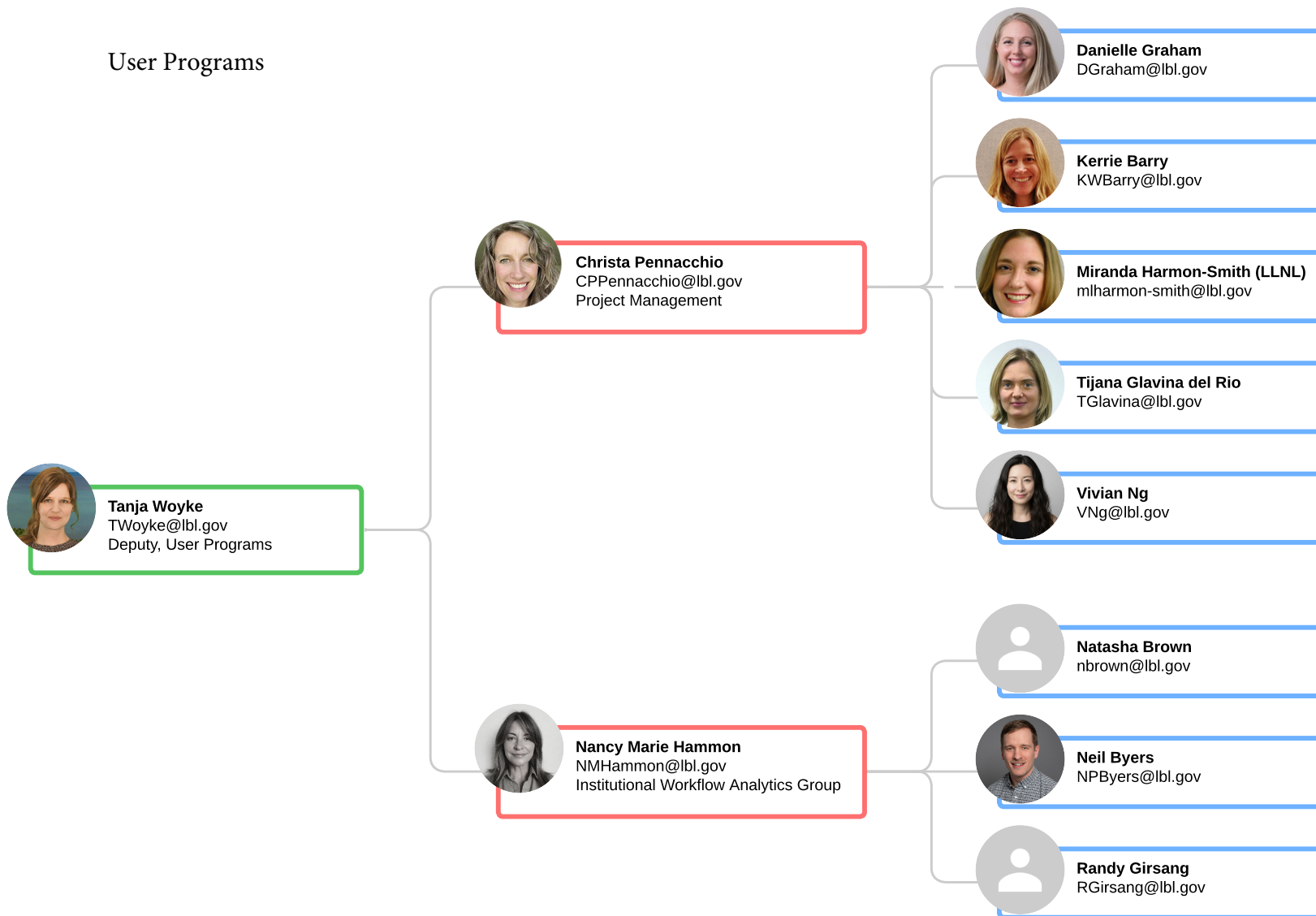
## Microbial Genome Science Program



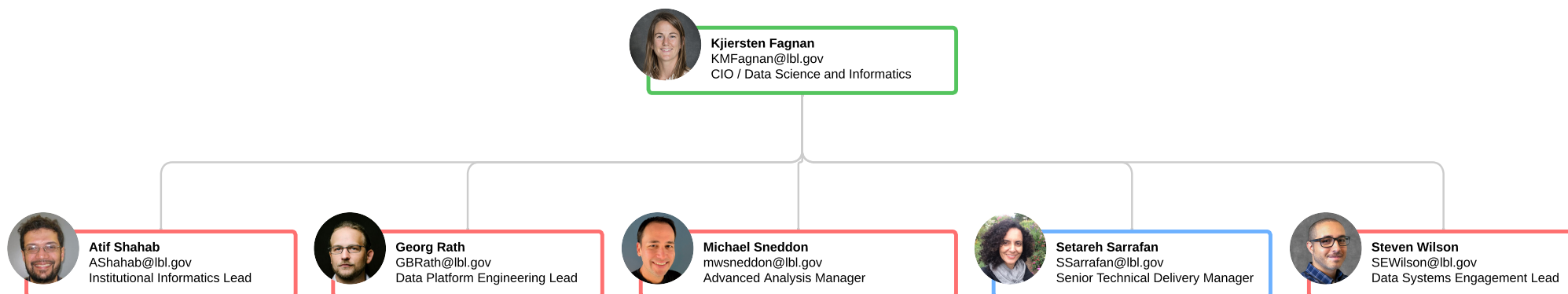
## Biosecurity



User Programs




## DSI - Leadership




## Data Platform Engineering




**Georg Rath**  
GBRath@lbl.gov  
Data Platform Engineering Lead



**Alexander Swafford**  
ASwafford@lbl.gov




**Alexandre Poliakov**  
AVPoliakov@lbl.gov



**Brian Yumae**  
BSYumae@lbl.gov




**Cindy Li**  
cindyli@lbl.gov




**Cody Webb**  
CodyWebb@lbl.gov




**Dimitrios Stamatis**  
DASTamatis@lbl.gov




**Drew Doering**  
DTDoering@lbl.gov




**Matthew Dunford**  
MDunford@lbl.gov



**Nathan Berkowitz**  
NBerkowitz@lbl.gov




**Roman Nikitin**  
RNikitin@lbl.gov




**Open Requisition #**  
105760


## Data Systems Engagement




**Steven Wilson**  
SEWilson@lbl.gov  
Data Systems Engagement Lead




**Chris Beecroft**  
CJBeecroft@lbl.gov




**Daniel Udvary**  
DWUdvary@lbl.gov




**Daniela Cassol**  
DCassol@lbl.gov




**Deanna Beatty**  
dsbeatty@lbl.gov




**Igor Shabalov**  
IShabalov@lbl.gov




**Jeremy Phillips**  
JLPhillips@lbl.gov




**Ken Chu**  
KLChu@lbl.gov



**Patrick Davidson**  
PADavidson@lbl.gov




**Ramani Kothadia**  
ramanik@lbl.gov




**Tatyana Smirnova**  
TSmirnova@lbl.gov

## Advanced Analysis

 **Michael Sneddon**  
mwsneddon@lbl.gov  
Advanced Analysis Manager


 **Ed Lee**  
ELee@lbl.gov

 **Elais Jackson**  
elais@lbl.gov

 **Marcel Huntemann**  
MHuntemann@lbl.gov

 **Mario Melara**  
MAMelara@lbl.gov


 **Nicole Free**  
NLFree@lbl.gov


 **Nicolas Haas**  
nhaas@lbl.gov

 **Rob Egan**  
RSEgan@lbl.gov

 **Seung-Jin Sul**  
SSul@lbl.gov

 **Stephan Ritter**  
SRitter@lbl.gov


 **Sumaira Zaman**  
SZaman@lbl.gov

 **Supratim Mukherjee**  
SupratimMukherjee@lbl.gov

 **TBK Reddy**  
TBReddy@lbl.gov

 **Tomas Bruna**  
TBruna@lbl.gov

 **Valerie Skye**  
vaskye@lbl.gov

 **Zhong Wang**  
ZhongWang@lbl.gov

## Institutional Informatics

